

**TOURIST ACCOMMODATION, NEW SOUTH WALES
MARCH QUARTER 1995**

MAIN FEATURES

MARCH QUARTER 1995
COMPARED WITH
MARCH QUARTER 1994

HOTELS, MOTELS AND GUEST HOUSES

- Rooms available decreased by 0.3 per cent from 56,769 to 56,627 while bed spaces increased from 164,085 to 164,647.
- Room nights occupied increased by 3.8 per cent from 2,882,825 to 2,992,268 overall, ranging from increases of around 6 per cent for Sydney, Hunter, Illawarra and South Eastern Statistical Divisions through to a decrease for Northern Statistical Division of 3.5 per cent.
- The room occupancy rate overall rose from 56.5 per cent to 58.8 per cent, with Sydney Statistical Division recording a 4.4 percentage point increase to 72.7 per cent.
- Guest nights increased by 2.9 per cent from 5,173,637 to 5,321,146 and the bed occupancy rate increased from 35.1 per cent to 36.0 per cent.
- Guest arrivals increased by 0.9 per cent from 2,743,033 to 2,768,559 while the average length of stay remained at 1.9 days overall, ranging from 1.6 days for star grade 2 establishments to 2.3 days for star grade 4 establishments.
- Takings from accommodation increased by 10.7 per cent from \$250.1m to \$276.9m and average takings per room night occupied increased from \$87 to \$93.

HOLIDAY FLATS, UNITS AND HOUSES

- The number of units, etc. available for short-term letting increased by 4.5 per cent from 10,389 to 10,854 while unit nights occupied increased by 7.0 per cent from 483,848 to 517,718.
- The unit occupancy rate increased from 51.8 per cent to 53.1 per cent.
- Unit lettings increased by 9.7 per cent from 76,783 to 84,215 while the average length of stay decreased from 6.3 days to 6.1 days.
- Accommodation takings increased by 14.9 per cent from \$30.5m to \$35.0m while the average takings per unit night occupied increased from \$63 to \$68.

CARAVAN PARKS

- Capacity available increased by 0.3 per cent from 95,249 to 95,507 powered and unpowered sites and cabins, etc.
- Long-term residents occupied 15,732 sites (16.5 per cent), while 23,197 sites (24.3 per cent) were permanently reserved but only casually occupied by their tenants and an average of 13,491 sites (14.1 per cent) were occupied by other short-term guests.
- Site nights occupied increased by 0.1 per cent from 4,714,443 to 4,717,764 and the site occupancy rate fell by 0.1 percentage points to 54.9 per cent.
- Takings from accommodation rose by 3.4 per cent from \$46.9m to \$48.5m while average takings per site night occupied were unchanged at \$10.

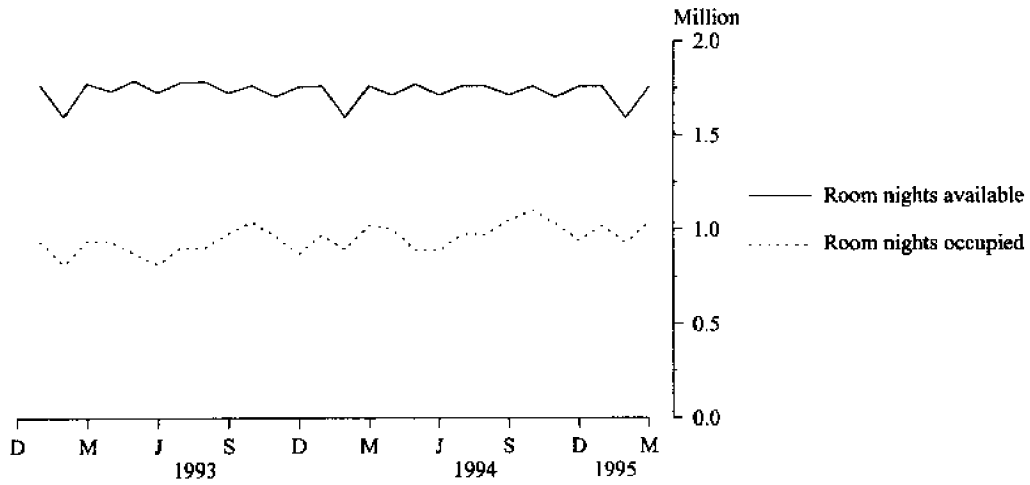
VISITOR HOSTELS

- Bed spaces available increased by 8.2 per cent from 5,129 to 5,551 while guest nights increased by 16.2 per cent from 268,673 to 312,086.
- The bed occupancy rate rose from 58.2 per cent to 62.5 per cent.
- Guest arrivals increased by 14.3 per cent from 79,404 to 90,788 while the average length of stay remained at 3.4 days.
- Accommodation takings increased by 23.1 per cent from \$3.6m to \$4.4m and the average tariff increased from \$13 to \$14 per guest night.

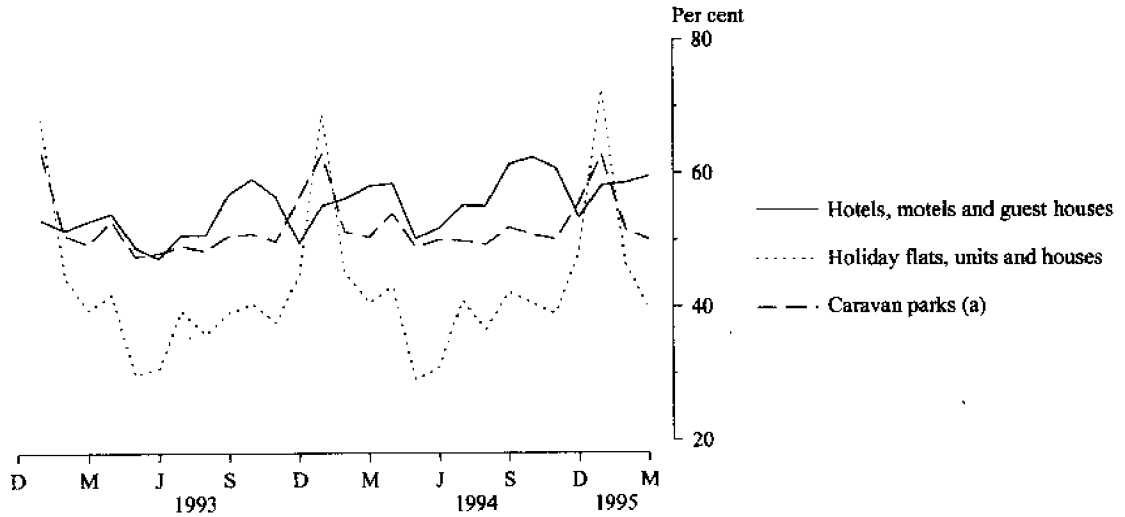
INQUIRIES

- *for further information about statistics in this publication and the availability of related unpublished statistics, contact Glenn Collins on 1800 077327 or any ABS office.*
 - *for information about other ABS statistics and services, refer to the back page of this publication.*
- *****

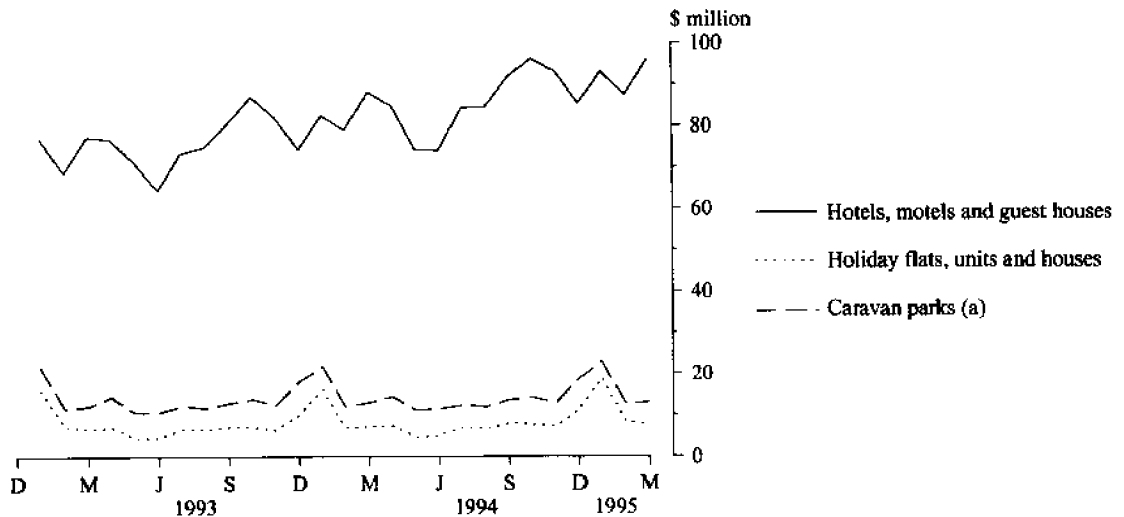
**MONTHLY ROOM NIGHTS AVAILABLE AND OCCUPIED:
HOTELS, MOTELS AND GUEST HOUSES,
NEW SOUTH WALES**



**MONTHLY OCCUPANCY RATES,
NEW SOUTH WALES**



**MONTHLY TAKINGS FROM ACCOMMODATION,
NEW SOUTH WALES**



CONTENTS

<i>Table</i>	<i>Page</i>
"	Main features 1
"	Diagrams 2
1	Summary of hotels, motels and guest houses with facilities, New South Wales 4
2	Summary of caravan parks, New South Wales 5
3	Summary of holiday flats, units and houses, New South Wales 6
4	Summary of visitor hostels, New South Wales 6
5	Hotels, motels and guest houses with facilities by establishment size, New South Wales 7
6	Hotels, motels and guest houses with facilities by star grading, Sydney Statistical Division and New South Wales 8
7	Hotels, motels and guest houses with facilities by statistical division, New South Wales 10
8	Hotels, motels and guest houses with facilities: Statistical divisions and selected statistical local areas, New South Wales 14
9	Holiday flats, units and houses by statistical division, New South Wales 20
10	Holiday flats, units and houses: Selected statistical divisions and statistical local areas, New South Wales 22
11	Caravan parks: Statistical divisions and selected statistical local areas, New South Wales 24
12	Caravan parks by statistical division, New South Wales 28
13	Visitor hostels by statistical division, New South Wales 31
"	Explanatory Notes 32
"	Reference map – statistical divisions of New South Wales 35

TABLE 1 — SUMMARY OF HOTELS, MOTELS AND GUEST HOUSES WITH FACILITIES, NEW SOUTH WALES (a)

Particulars	Unit	Quarter ended				Year ended			
		December 1993	March 1994	June 1994	September 1994	December 1994	March 1995	March 1994	March 1995
LICENSED HOTELS WITH FACILITIES									
Establishments	No.	267	268	270	268	271	266
Guest rooms	No.	18,512	18,531	18,569	18,509	18,896	18,836
Bed spaces	No.	46,916	46,582	46,852	47,341	48,868	48,193
Employment (persons)	No.	16,038	16,058	16,227	16,522	16,914	16,574
Room nights occupied	'000	1,025.8	1,061.4	975.7	1,086.4	1,183.5	1,144.9	3,896.5	4,390.6
Room occupancy rate	per cent	60.7	63.7	57.7	63.8	68.1	67.7	57.4	64.4
Guest nights	'000	1,683.4	1,708.5	1,547.0	1,818.3	1,898.8	1,831.2	6,292.7	7,095.3
Bed occupancy rate	per cent	39.7	40.8	36.3	41.7	42.2	42.4	36.9	40.7
Guest arrivals	'000	791.0	809.7	710.5	837.4	933.6	824.0	2,930.0	3,305.4
Average length of stay	days	2.1	2.1	2.2	2.2	2.0	2.2	2.1	2.1
Takings from accommodation	\$'000	113,482	118,245	107,082	120,915	137,662	139,260	424,911	504,918
MOTELS AND GUEST HOUSES WITH FACILITIES									
Establishments	No.	1,459	1,452	1,458	1,454	1,447	1,448
Guest rooms	No.	38,389	38,238	38,443	38,382	37,749	37,791
Bed spaces	No.	117,847	117,503	118,265	117,850	116,430	116,454
Employment (persons)	No.	14,528	14,410	14,589	14,828	14,624	14,473
Room nights occupied	'000	1,846.0	1,821.4	1,797.9	1,904.3	1,881.7	1,847.3	7,267.0	7,431.3
Room occupancy rate	per cent	52.4	53.0	51.4	54.0	54.2	54.4	51.8	53.5
Guest nights	'000	3,439.1	3,465.2	3,279.2	3,560.8	3,511.2	3,489.9	13,494.2	13,841.1
Bed occupancy rate	per cent	31.8	32.8	30.5	32.9	32.8	33.3	31.4	32.4
Guest arrivals	'000	1,966.2	1,933.3	1,911.1	2,099.7	2,001.4	1,944.6	7,755.3	7,956.7
Average length of stay	days	1.7	1.8	1.7	1.7	1.8	1.8	1.7	1.7
Takings from accommodation	\$'000	130,079	131,829	126,379	140,105	137,236	137,639	511,176	541,360
TOTAL HOTELS, MOTELS AND GUEST HOUSES WITH FACILITIES									
Establishments	No.	1,726	1,720	1,728	1,722	1,718	1,714
Guest rooms	No.	56,901	56,769	57,012	56,891	56,645	56,627
Bed spaces	No.	164,763	164,085	165,117	165,191	165,298	164,647
Employment (persons)	No.	30,566	30,468	30,816	31,350	31,538	31,047
Room nights occupied	'000	2,871.8	2,882.8	2,773.6	2,990.7	3,065.3	2,992.3	11,163.5	11,821.8
Room occupancy rate	per cent	55.1	56.5	53.5	57.2	58.8	58.8	53.6	57.1
Guest nights	'000	5,122.6	5,173.6	4,826.2	5,379.1	5,410.0	5,321.1	19,786.9	20,936.4
Bed occupancy rate	per cent	34.0	35.1	32.1	35.4	35.6	36.0	32.9	34.8
Guest arrivals	'000	2,757.2	2,743.0	2,621.5	2,937.1	2,935.0	2,768.6	10,685.2	11,262.2
Average length of stay	days	1.9	1.9	1.8	1.8	1.8	1.9	1.9	1.9
Takings from accommodation	\$'000	243,561	250,074	233,461	261,020	274,898	276,899	936,087	1,046,279

(a) From December quarter 1993, establishments with fewer than 5 rooms have been formally excluded from the scope of this collection. See Explanatory Note 2 (page 32).

TABLE 2 — SUMMARY OF CARAVAN PARKS, NEW SOUTH WALES

Particulars	Unit	Quarter ended				Year ended			
		December 1993	March 1994	June 1994	September 1994	December 1994	March 1995	March 1994	March 1995
SHORT-TERM CARAVAN PARKS (a)									
Establishments	No.	471	471	469	486	481	478
Capacity									
On-site vans	No.	3,285	3,274	3,244	3,355	3,361	3,341
Other powered sites	No.	42,805	42,501	42,593	43,210	42,983	43,043
Unpowered sites	No.	16,010	15,526	14,999	15,454	15,593	15,722
Cabins, etc.	No.	2,835	2,876	2,916	3,064	3,050	3,055
<i>Total capacity</i>	<i>No.</i>	<i>64,935</i>	<i>64,177</i>	<i>63,752</i>	<i>65,083</i>	<i>64,987</i>	<i>65,161</i>
Sites occupied by long-term guests	No.	3,504	3,544	3,557	3,685	3,620	3,680
Other sites permanently reserved	No.	21,902	21,998	21,892	21,985	22,027	22,175
Employment (persons)	No.	1,891	1,893	1,795	1,901	2,092	2,015
Site nights occupied	'000	3,089.1	3,224.5	2,949.8	2,984.4	3,125.0	3,270.5	11,676.1	12,329.7
Site occupancy rate	per cent	52.4	55.8	50.8	49.8	52.3	55.8	51.2	52.2
Takings from accommodation	\$'000	27,967	29,955	21,453	22,725	29,689	31,335	97,824	105,202
LONG-TERM CARAVAN PARKS (a)									
Establishments	No.	327	326	325	312	312	311
Capacity									
On-site vans	No.	3,621	3,665	3,649	3,461	3,467	3,513
Other powered sites	No.	20,599	20,657	20,644	20,034	20,062	20,076
Unpowered sites	No.	4,986	4,835	4,788	4,615	4,693	4,795
Cabins, etc.	No.	1,861	1,915	1,936	1,902	1,963	1,962
<i>Total capacity</i>	<i>No.</i>	<i>31,067</i>	<i>31,072</i>	<i>31,017</i>	<i>30,012</i>	<i>30,185</i>	<i>30,346</i>
Sites occupied by long-term guests	No.	12,309	12,235	12,274	12,018	12,065	12,052
Other sites permanently reserved	No.	1,257	1,295	1,334	1,143	1,125	1,022
Employment (persons)	No.	1,227	1,183	1,179	1,163	1,171	1,151
Site nights occupied	'000	1,496.0	1,490.0	1,450.1	1,423.3	1,437.8	1,447.3	6,256.8	5,758.5
Site occupancy rate	per cent	52.5	53.3	51.4	51.5	51.8	53.0	52.4	51.9
Takings from accommodation	\$'000	16,162	16,901	15,560	15,418	16,173	17,126	65,730	64,278
TOTAL CARAVAN PARKS									
Establishments	No.	798	797	794	798	793	789
Capacity									
On-site vans	No.	6,906	6,939	6,893	6,816	6,828	6,854
Other powered sites	No.	63,404	63,158	63,237	63,244	63,045	63,119
Unpowered sites	No.	20,996	20,361	19,787	20,069	20,286	20,517
Cabins, etc.	No.	4,696	4,791	4,852	4,966	5,013	5,017
<i>Total capacity</i>	<i>No.</i>	<i>96,002</i>	<i>95,249</i>	<i>94,769</i>	<i>95,095</i>	<i>95,172</i>	<i>95,507</i>
Sites occupied by long-term guests	No.	15,813	15,779	15,831	15,703	15,685	15,732
Other sites permanently reserved	No.	23,159	23,293	23,226	23,128	23,152	23,197
Employment (persons)	No.	3,118	3,076	2,974	3,064	3,263	3,166
Site nights occupied	'000	4,585.1	4,714.4	4,399.9	4,407.7	4,562.8	4,717.8	17,933.0	18,088.1
Site occupancy rate	per cent	52.4	55.0	51.0	50.4	52.1	54.9	51.6	52.1
Takings from accommodation	\$'000	44,129	46,856	37,014	38,143	45,862	48,461	163,555	169,480

(a) A review of the occupancy of individual caravan parks resulted in reclassification of a net 13 caravan parks in September quarter 1994 from predominantly long-term to predominantly short-term.

TABLE 3 — SUMMARY OF HOLIDAY FLATS, UNITS AND HOUSES, NEW SOUTH WALES

Particulars	Unit	Quarter ended				Year ended			
		December 1993	March 1994	June 1994	September 1994	December 1994	March 1995	March 1994	March 1995
Letting entities	No.	409	404	405	408	411	415
Flats, units and houses									
Single bedroom	No.	1,983	1,931	1,912	1,930	2,036	2,057
Multiple bedroom	No.	8,457	8,458	8,450	8,493	8,723	8,797
<i>Total flats, units and houses</i>	<i>No.</i>	<i>10,440</i>	<i>10,389</i>	<i>10,362</i>	<i>10,423</i>	<i>10,759</i>	<i>10,854</i>	<i>..</i>	<i>..</i>
Bed spaces	No.	48,817	48,601	48,315	48,518	50,408	50,846
Employment (persons)(a)	No.	1,105	1,154	1,081	1,075	1,151	1,186
Unit nights occupied	'000	392.8	483.8	323.4	382.3	422.2	517.7	1,555.1	1,645.6
Unit occupancy rate	per cent	41.0	51.8	34.3	40.0	42.7	53.1	41.3	42.6
Unit lettings	'000	70.7	76.8	60.3	69.0	83.6	84.2	266.9	297.2
Average length of stay	days	5.6	6.3	5.4	5.5	5.0	6.1	5.8	5.5
Takings from accommodation	\$'000	23,450	30,463	17,423	21,554	26,309	35,016	90,590	100,302

(a) Employment numbers exclude real estate agents and their employees.

TABLE 4 — SUMMARY OF VISITOR HOSTELS, NEW SOUTH WALES

Particulars	Unit	Quarter ended				Year ended			
		December 1993	March 1994	June 1994	September 1994	December 1994	March 1995	March 1994	March 1995
Establishments	No.	78	79	77	81	88	86
Bed spaces	No.	5,026	5,129	4,979	5,346	5,774	5,551
Employment (persons)	No.	300	297	280	299	327	356
Guest nights	'000	258.7	268.7	205.7	242.7	320.8	312.1	929.5	1,081.4
Bed occupancy rate	per cent	56.5	58.2	45.4	49.4	60.4	62.5	51.4	54.7
Guest arrivals	'000	73.3	79.4	59.6	68.3	97.3	90.8	273.4	316.1
Average length of stay	days	3.5	3.4	3.5	3.6	3.3	3.4	3.4	3.4
Takings from accommodation	\$'000	3,406	3,575	2,736	3,106	4,353	4,400	12,019	14,595

TABLE 5 — HOTELS, MOTELS AND GUEST HOUSES WITH FACILITIES BY ESTABLISHMENT SIZE,
NEW SOUTH WALES

Particulars	Establishment size (No. of rooms)						New South Wales
	5-9	10-15	16-25	26-50	51-100	101+	
ESTABLISHMENTS, CAPACITY AND EMPLOYMENT							
<i>March quarter 1994—</i>							
Establishments	172	420	521	422	111	74	1,720
Guest rooms	1,254	5,139	10,494	14,663	7,551	17,668	56,769
Bed spaces	3,792	15,723	31,790	45,445	22,354	44,981	164,085
Employment (persons)	1,182	2,363	3,282	5,693	4,081	13,867	30,468
<i>March quarter 1995—</i>							
Establishments	172	411	522	426	109	74	1,714
Guest rooms	1,255	5,017	10,499	14,811	7,359	17,686	56,627
Bed spaces	3,792	15,306	31,933	45,864	22,336	45,416	164,647
Employment (persons)	1,150	2,210	3,562	5,916	4,115	14,094	31,047
ROOM NIGHTS OCCUPIED ('000)							
<i>March quarter 1994</i>	42.4	211.9	447.3	626.3	400.5	1,154.4	2,882.8
<i>1995—</i>							
January	17.5	82.3	173.7	227.7	137.1	381.8	1,020.1
February	12.4	59.8	130.0	192.4	129.2	404.5	928.4
March	14.3	69.9	156.3	226.4	141.0	435.9	1,043.8
<i>March quarter 1995</i>	44.2	212.1	460.0	646.5	407.3	1,222.3	2,992.3
ROOM OCCUPANCY RATES (per cent)							
<i>March quarter 1994</i>	37.8	46.0	47.4	47.5	59.2	72.6	56.5
<i>1995—</i>							
January	45.1	52.9	53.4	49.9	60.1	69.6	58.2
February	35.2	42.6	44.2	46.5	62.9	81.8	58.6
March	36.6	45.0	48.0	49.3	62.1	79.8	59.6
<i>March quarter 1995</i>	39.1	47.0	48.7	48.6	61.6	76.9	58.8
GUEST NIGHTS ('000)							
<i>March quarter 1994</i>	85.7	408.0	858.3	1,165.3	726.0	1,930.4	5,173.6
<i>1995—</i>							
January	37.9	177.1	368.0	481.6	286.8	682.7	2,034.1
February	22.9	106.2	225.2	326.3	217.7	652.5	1,550.8
March	25.8	124.2	272.0	384.3	237.9	692.1	1,736.3
<i>March quarter 1995</i>	86.7	407.5	865.3	1,192.1	742.4	2,027.2	5,321.1
BED OCCUPANCY RATES (per cent)							
<i>March quarter 1994</i>	25.2	28.9	30.0	28.5	36.2	47.7	35.1
<i>1995—</i>							
January	32.3	37.3	37.2	34.1	41.4	48.5	39.9
February	21.6	24.8	25.2	25.5	34.9	51.4	33.7
March	22.0	26.2	27.5	27.0	34.6	49.4	34.1
<i>March quarter 1995</i>	25.4	29.6	30.1	29.0	37.0	49.7	36.0
GUEST ARRIVALS ('000)							
<i>March quarter 1994</i>	47.6	261.9	559.8	698.3	315.1	860.3	2,743.0
<i>1995—</i>							
January	20.8	108.7	232.0	274.7	126.7	273.7	1,036.6
February	13.6	68.9	147.4	194.6	105.3	281.4	811.3
March	15.6	81.3	178.9	232.7	117.2	295.1	920.7
<i>March quarter 1995</i>	50.0	258.9	558.3	702.0	349.2	850.1	2,768.6
AVERAGE LENGTH OF STAY (days)							
<i>March quarter 1994</i>	1.8	1.6	1.5	1.7	2.3	2.2	1.9
<i>March quarter 1995</i>	1.7	1.6	1.5	1.7	2.1	2.4	1.9
TAKINGS FROM ACCOMMODATION (\$'000)							
<i>March quarter 1994</i>	2,483	10,832	25,284	41,882	35,986	133,607	250,074
<i>1995—</i>							
January	1,180	4,814	10,882	16,700	13,507	46,012	93,096
February	743	2,983	7,123	13,144	12,196	51,380	87,569
March	838	3,454	8,594	15,285	12,965	55,099	96,235
<i>March quarter 1995</i>	2,760	11,251	26,600	45,129	38,668	152,491	276,899

**TABLE 6 — HOTELS, MOTELS AND GUEST HOUSES WITH FACILITIES BY STAR GRADING,
SYDNEY STATISTICAL DIVISION AND NEW SOUTH WALES**

Sydney Statistical Division						
Particulars	Star grading					Total
	1 and 2	3	4	5	Ungraded	
ESTABLISHMENTS, CAPACITY AND EMPLOYMENT						
<i>March quarter 1994—</i>						
Establishments	76	138	55	18	48	335
Guest rooms	1,890	6,953	n.p.	n.p.	2,220	25,356
Bed spaces	5,208	19,570	n.p.	n.p.	5,395	65,665
Employment (persons)	1,272	3,148	n.p.	n.p.	1,769	18,184
<i>March quarter 1995—</i>						
Establishments	74	150	53	16	39	332
Guest rooms	1,774	7,616	8,936	4,690	2,154	25,170
Bed spaces	4,830	21,518	23,766	11,065	4,973	66,152
Employment (persons)	1,371	3,624	6,974	4,561	2,030	18,560
ROOM NIGHTS OCCUPIED ('000)						
<i>March quarter 1994</i>	91.3	406.9	n.p.	n.p.	107.3	1,557.0
<i>1995—</i>						
January	32.0	155.1	197.3	102.3	38.0	524.6
February	29.0	145.9	212.5	108.6	43.0	538.9
March	31.9	160.1	232.4	110.7	44.5	579.6
<i>March quarter 1995</i>	92.9	461.1	642.1	321.7	125.5	1,643.2
ROOM OCCUPANCY RATES (per cent)						
<i>March quarter 1994</i>	53.7	65.0	n.p.	n.p.	54.1	68.3
<i>1995—</i>						
January	58.2	65.7	71.2	70.4	57.2	67.3
February	58.3	68.4	85.2	82.7	71.8	76.6
March	58.0	67.8	84.4	76.2	67.9	74.6
<i>March quarter 1995</i>	58.2	67.3	80.1	76.2	65.4	72.7
GUEST NIGHTS ('000)						
<i>March quarter 1994</i>	160.1	729.1	n.p.	n.p.	170.2	2,634.9
<i>1995—</i>						
January	59.9	308.9	356.0	170.2	60.3	955.3
February	49.4	247.8	342.2	172.1	67.7	879.2
March	54.2	271.2	365.1	175.7	64.6	930.8
<i>March quarter 1995</i>	163.4	827.9	1,063.4	517.9	192.6	2,765.3
BED OCCUPANCY RATES (per cent)						
<i>March quarter 1994</i>	34.2	41.4	n.p.	n.p.	35.3	44.6
<i>1995—</i>						
January	40.0	46.3	48.3	49.6	39.3	46.6
February	36.5	41.1	51.6	55.5	49.2	47.6
March	36.2	40.7	50.0	51.2	43.0	45.6
<i>March quarter 1995</i>	37.6	42.7	49.9	52.0	43.7	46.6
GUEST ARRIVALS ('000)						
<i>March quarter 1994</i>	74.6	321.2	n.p.	n.p.	78.0	1,159.4
<i>1995—</i>						
January	27.4	127.7	134.4	75.0	25.3	389.8
February	23.0	110.0	146.0	79.6	27.7	386.2
March	26.3	123.7	148.9	82.0	29.1	410.1
<i>March quarter 1995</i>	76.7	361.4	429.3	236.6	82.1	1,186.1
AVERAGE LENGTH OF STAY (days)						
<i>March quarter 1994</i>	2.1	2.3	n.p.	n.p.	2.2	2.3
<i>March quarter 1995</i>	2.1	2.3	2.5	2.2	2.3	2.3
TAKINGS FROM ACCOMMODATION (\$'000)						
<i>March quarter 1994</i>	5,578	32,673	n.p.	n.p.	10,156	166,024
<i>1995—</i>						
January	2,054	13,525	21,488	16,122	4,503	57,691
February	1,815	12,729	24,459	18,671	5,403	63,076
March	1,982	14,158	26,247	19,324	5,652	67,364
<i>March quarter 1995</i>	5,851	40,412	72,195	54,117	15,557	188,131

TABLE 6—HOTELS, MOTELS AND GUEST HOUSES WITH FACILITIES BY STAR GRADING,
 SYDNEY STATISTICAL DIVISION AND NEW SOUTH WALES—continued

Particulars	New South Wales						Total
	Star grading						
	1	2	3	4	5	Ungraded	
ESTABLISHMENTS, CAPACITY AND EMPLOYMENT							
<i>March quarter 1994—</i>							
Establishments	38	557	739	123	19	244	1,720
Guest rooms	564	11,278	21,703	11,712	5,716	5,796	56,769
Bed spaces	1,427	35,088	65,690	33,287	12,522	16,071	164,085
Employment (persons)	281	4,214	8,534	8,476	5,896	3,067	30,468
<i>March quarter 1995—</i>							
Establishments	41	511	809	123	16	214	1,714
Guest rooms	737	10,164	23,882	11,925	4,690	5,229	56,627
Bed spaces	2,015	31,374	72,426	33,452	11,065	14,315	164,647
Employment (persons)	490	3,999	9,550	9,328	4,561	3,119	31,047
ROOM NIGHTS OCCUPIED ('000)							
<i>March quarter 1994</i>	20.1	441.6	1,089.2	750.4	378.1	203.3	2,882.8
<i>1995—</i>							
January	8.5	151.6	429.5	261.0	102.3	67.2	1,020.1
February	7.4	117.1	364.5	266.1	108.6	64.7	928.4
March	8.4	137.9	425.3	291.7	110.7	69.6	1,043.8
<i>March quarter 1995</i>	24.2	406.6	1,219.3	818.9	321.7	201.6	2,992.3
ROOM OCCUPANCY RATES (per cent)							
<i>March quarter 1994</i>	39.6	43.5	55.8	71.2	73.5	39.2	56.5
<i>1995—</i>							
January	37.2	48.2	58.1	70.6	70.4	41.8	58.2
February	35.7	41.1	54.5	79.9	82.7	44.5	58.6
March	36.7	43.8	57.5	79.3	76.2	43.3	59.6
<i>March quarter 1995</i>	36.5	44.5	56.8	76.5	76.2	43.2	58.8
GUEST NIGHTS ('000)							
<i>March quarter 1994</i>	32.6	832.5	2,043.0	1,292.7	628.1	344.8	5,173.6
<i>1995—</i>							
January	14.8	315.5	912.4	501.3	170.2	119.9	2,034.1
February	11.6	203.4	621.5	437.7	172.1	104.4	1,550.8
March	13.2	240.8	726.9	472.1	175.7	107.7	1,736.3
<i>March quarter 1995</i>	39.6	759.7	2,260.7	1,411.2	517.9	332.0	5,321.1
BED OCCUPANCY RATES (per cent)							
<i>March quarter 1994</i>	25.4	26.4	34.6	43.2	55.7	24.0	35.1
<i>1995—</i>							
January	23.7	32.6	40.7	48.3	49.6	27.3	39.9
February	20.6	23.2	30.7	46.9	55.5	26.2	33.7
March	21.1	24.8	32.4	45.8	51.2	24.5	34.1
<i>March quarter 1995</i>	21.9	26.9	34.7	47.0	52.0	26.0	36.0
GUEST ARRIVALS ('000)							
<i>March quarter 1994</i>	18.6	510.2	1,170.3	602.6	261.0	180.4	2,743.0
<i>1995—</i>							
January	8.5	191.2	500.0	205.9	75.0	55.9	1,036.6
February	6.6	124.4	354.6	198.3	79.6	47.8	811.3
March	7.3	148.0	423.6	207.0	82.0	52.8	920.7
<i>March quarter 1995</i>	22.4	463.7	1,278.2	611.2	236.6	156.5	2,768.6
AVERAGE LENGTH OF STAY (days)							
<i>March quarter 1994</i>	1.8	1.6	1.7	2.1	2.4	1.9	1.9
<i>March quarter 1995</i>	1.8	1.6	1.8	2.3	2.2	2.1	1.9
TAKINGS FROM ACCOMMODATION (\$'000)							
<i>March quarter 1994</i>	883	22,910	75,988	77,683	57,053	15,557	250,074
<i>1995—</i>							
January	434	8,484	33,037	28,528	16,122	6,492	93,096
February	355	5,845	26,390	29,563	18,671	6,745	87,569
March	381	6,931	30,677	31,736	19,324	7,186	96,235
<i>March quarter 1995</i>	1,169	21,260	90,104	89,826	54,117	20,422	276,899

**TABLE 7 — HOTELS, MOTELS AND GUEST HOUSES WITH FACILITIES BY STATISTICAL DIVISION,
NEW SOUTH WALES**

Particulars	Sydney (SD)			Hunter (SD)			Illawarra (SD)		
	Licensed hotels	Motels, etc.	Total	Licensed hotels	Motels, etc.	Total	Licensed hotels	Motels, etc.	Total
ESTABLISHMENTS, CAPACITY AND EMPLOYMENT									
<i>March quarter 1994—</i>									
Establishments	107	228	335	20	138	158	16	105	121
Guest rooms	14,582	10,774	25,356	430	3,468	3,898	560	2,269	2,829
Bed spaces	34,554	31,111	65,665	1,268	10,787	12,055	1,554	6,803	8,357
Employment (persons)	13,496	4,688	18,184	400	1,764	2,164	619	795	1,414
<i>March quarter 1995—</i>									
Establishments	109	223	332	20	139	159	16	103	119
Guest rooms	14,856	10,314	25,170	480	3,463	3,943	576	2,208	2,784
Bed spaces	35,945	30,207	66,152	1,461	10,567	12,028	1,597	6,679	8,276
Employment (persons)	13,992	4,568	18,560	433	1,768	2,201	685	865	1,550
ROOM NIGHTS OCCUPIED ('000)									
<i>March quarter 1994</i>	937.9	619.1	1,557.0	16.4	168.6	185.0	25.5	95.8	121.3
<i>1995—</i>									
January	312.8	211.8	524.6	7.8	60.7	68.5	10.1	37.1	47.2
February	341.0	197.9	538.9	6.5	53.7	60.2	9.8	29.4	39.2
March	364.6	215.1	579.6	7.8	59.4	67.3	10.4	31.5	41.8
<i>March quarter 1995</i>	1,018.4	624.8	1,643.2	22.2	173.8	196.0	30.2	98.0	128.2
ROOM OCCUPANCY RATES (per cent)									
<i>March quarter 1994</i>	71.5	63.9	68.3	42.5	54.1	52.8	50.6	46.9	47.6
<i>1995—</i>									
January	67.9	66.3	67.3	52.6	56.6	56.1	56.6	54.6	55.1
February	82.2	68.5	76.6	48.2	55.4	54.5	60.7	47.9	50.6
March	79.7	67.3	74.6	52.8	55.3	55.0	58.0	46.0	48.4
<i>March quarter 1995</i>	76.4	67.3	72.7	51.3	55.8	55.2	58.4	49.5	51.4
GUEST NIGHTS ('000)									
<i>March quarter 1994</i>	1,498.2	1,136.7	2,634.9	33.4	311.6	345.1	44.6	187.2	231.7
<i>1995—</i>									
January	528.2	427.0	955.3	16.3	131.9	148.2	18.2	80.5	98.8
February	534.6	344.6	879.2	10.6	92.1	102.7	14.7	54.3	69.0
March	559.4	371.3	930.8	11.9	101.0	112.9	17.0	55.4	72.5
<i>March quarter 1995</i>	1,622.3	1,143.0	2,765.3	38.7	325.0	363.8	49.9	190.3	240.3
BED OCCUPANCY RATES (per cent)									
<i>March quarter 1994</i>	48.2	40.6	44.6	29.3	32.1	31.8	31.9	30.6	30.8
<i>1995—</i>									
January	47.4	45.6	46.6	35.9	40.3	39.7	36.8	39.1	38.7
February	53.3	40.7	47.6	25.8	31.1	30.5	32.9	29.2	29.9
March	50.7	39.7	45.6	26.3	30.8	30.3	34.4	26.8	28.2
<i>March quarter 1995</i>	50.4	42.1	46.6	29.5	34.2	33.6	34.8	31.8	32.3
GUEST ARRIVALS ('000)									
<i>March quarter 1994</i>	694.1	465.3	1,159.4	16.2	175.8	192.0	24.7	104.7	129.4
<i>1995—</i>									
January	222.1	167.7	389.8	7.6	66.1	73.7	9.3	44.9	54.2
February	235.9	150.3	386.2	5.6	51.6	57.1	9.1	33.8	43.0
March	247.4	162.7	410.1	6.2	59.9	66.1	9.2	35.2	44.4
<i>March quarter 1995</i>	705.4	480.7	1,186.1	19.4	177.5	196.9	27.6	114.0	141.6
AVERAGE LENGTH OF STAY (days)									
<i>March quarter 1994</i>	2.2	2.4	2.3	2.1	1.8	1.8	1.8	1.8	1.8
<i>March quarter 1995</i>	2.3	2.4	2.3	2.0	1.8	1.8	1.8	1.7	1.7
TAKINGS FROM ACCOMMODATION (\$'000)									
<i>March quarter 1994</i>	111,240	54,783	166,024	1,020	12,843	13,862	2,366	6,794	9,160
<i>1995—</i>									
January	38,271	19,420	57,691	624	5,055	5,679	1,043	2,866	3,909
February	45,013	18,062	63,076	430	4,080	4,511	1,073	2,061	3,134
March	47,605	19,759	67,364	529	4,409	4,938	1,143	2,215	3,358
<i>March quarter 1995</i>	130,889	57,242	188,131	1,583	13,545	15,127	3,260	7,141	10,401

TABLE 7 — HOTELS, MOTELS AND GUEST HOUSES WITH FACILITIES BY STATISTICAL DIVISION,
NEW SOUTH WALES—continued

Particulars	Richmond - Tweed (SD)			Mid - North Coast (SD)			Northern (SD)		
	Licensed hotels	Motels, etc.	Total	Licensed hotels	Motels, etc.	Total	Licensed hotels	Motels, etc.	Total
ESTABLISHMENTS, CAPACITY AND EMPLOYMENT									
<i>March quarter 1994—</i>									
Establishments	9	100	109	13	179	192	11	115	126
Guest rooms	137	1,875	2,012	254	3,868	4,122	164	2,570	2,734
Bed spaces	419	6,053	6,472	628	12,445	13,073	435	7,931	8,366
Employment (persons)	110	584	694	188	1,589	1,777	92	862	954
<i>March quarter 1995—</i>									
Establishments	8	100	108	12	180	192	11	113	124
Guest rooms	132	1,826	1,958	239	3,908	4,147	161	2,524	2,685
Bed spaces	413	5,810	6,223	600	12,604	13,204	423	7,799	8,222
Employment (persons)	115	531	646	179	1,655	1,834	94	831	925
ROOM NIGHTS OCCUPIED ('000)									
<i>March quarter 1994</i>	4.9	83.8	88.7	9.4	199.0	208.4	4.0	112.6	116.6
<i>1995—</i>									
January	2.1	33.2	35.3	3.3	86.3	89.6	1.4	39.2	40.6
February	1.5	23.7	25.2	2.4	53.3	55.7	1.2	31.5	32.7
March	1.5	26.4	27.8	2.6	60.9	63.5	1.6	37.6	39.1
<i>March quarter 1995</i>	5.1	83.3	88.3	8.3	200.6	208.9	4.2	108.3	112.5
ROOM OCCUPANCY RATES (per cent)									
<i>March quarter 1994</i>	39.7	49.8	49.1	41.3	57.3	56.3	27.0	48.9	47.6
<i>1995—</i>									
January	51.0	58.6	58.1	45.1	71.2	69.7	28.6	50.1	48.8
February	41.3	46.4	46.0	35.5	48.8	48.0	26.4	44.6	43.5
March	35.6	46.6	45.9	35.1	50.3	49.4	31.2	48.0	47.0
<i>March quarter 1995</i>	42.7	50.7	50.1	38.7	57.0	56.0	28.8	47.7	46.5
GUEST NIGHTS ('000)									
<i>March quarter 1994</i>	8.9	168.9	177.8	14.8	433.5	448.3	6.0	207.7	213.7
<i>1995—</i>									
January	4.5	70.2	74.7	5.7	219.6	225.3	2.1	83.1	85.1
February	2.6	40.8	43.4	3.5	107.2	110.7	1.6	50.5	52.1
March	2.5	45.5	48.0	4.0	122.5	126.5	2.0	61.3	63.3
<i>March quarter 1995</i>	9.6	156.5	166.1	13.1	449.3	462.5	5.8	194.9	200.6
BED OCCUPANCY RATES (per cent)									
<i>March quarter 1994</i>	23.6	31.1	30.6	26.2	38.8	38.2	15.4	29.2	28.5
<i>1995—</i>									
January	35.5	39.0	38.7	30.5	56.2	55.0	15.8	34.4	33.4
February	22.5	25.1	24.9	20.8	30.4	29.9	13.9	23.1	22.7
March	19.2	25.3	24.9	21.3	31.4	30.9	15.6	25.3	24.8
<i>March quarter 1995</i>	25.8	29.9	29.7	24.3	39.6	38.9	15.1	27.8	27.1
GUEST ARRIVALS ('000)									
<i>March quarter 1994</i>	4.4	98.3	102.7	8.0	246.5	254.6	4.5	151.1	155.5
<i>1995—</i>									
January	2.0	39.8	41.9	3.3	127.1	130.4	1.5	58.2	59.8
February	1.4	25.4	26.8	2.1	64.8	66.9	1.1	36.7	37.8
March	1.4	27.7	29.1	2.5	71.6	74.1	1.5	46.8	48.2
<i>March quarter 1995</i>	4.8	93.0	97.8	7.9	263.5	271.4	4.1	141.7	145.8
AVERAGE LENGTH OF STAY (days)									
<i>March quarter 1994</i>	2.0	1.7	1.7	1.8	1.8	1.8	1.3	1.4	1.4
<i>March quarter 1995</i>	2.0	1.7	1.7	1.7	1.7	1.7	1.4	1.4	1.4
TAKINGS FROM ACCOMMODATION (\$'000)									
<i>March quarter 1994</i>	234	5,068	5,302	339	14,001	14,340	138	6,400	6,539
<i>1995—</i>									
January	105	2,265	2,370	181	7,420	7,601	47	2,437	2,483
February	73	1,312	1,385	106	3,454	3,560	39	1,787	1,826
March	69	1,447	1,516	136	3,818	3,954	51	2,124	2,175
<i>March quarter 1995</i>	247	5,025	5,272	423	14,691	15,115	137	6,348	6,484

TABLE 7—HOTELS, MOTELS AND GUEST HOUSES WITH FACILITIES BY STATISTICAL DIVISION,
NEW SOUTH WALES—continued

Particulars	North Western and Far West (SDs)			Central West (SD)			South Eastern (SD)		
	Licensed hotels	Motels, etc.	Total	Licensed hotels	Motels, etc.	Total	Licensed hotels	Motels, etc.	Total
ESTABLISHMENTS, CAPACITY AND EMPLOYMENT									
<i>March quarter 1994—</i>									
Establishments	14	109	123	14	76	90	28	194	222
Guest rooms	266	2,455	2,721	417	1,703	2,120	999	4,334	5,333
Bed spaces	700	7,807	8,507	1,142	5,239	6,381	4,038	13,833	17,871
Employment (persons)	231	857	1,088	288	620	908	268	1,075	1,343
<i>March quarter 1995—</i>									
Establishments	13	111	124	13	78	91	28	195	223
Guest rooms	241	2,509	2,750	379	1,775	2,154	1,059	4,309	5,368
Bed spaces	643	7,906	8,549	984	5,462	6,446	4,281	13,683	17,964
Employment (persons)	159	872	1,031	234	709	943	285	1,071	1,356
ROOM NIGHTS OCCUPIED ('000)									
<i>March quarter 1994</i>	6.5	100.7	107.3	16.0	72.6	88.6	15.9	149.8	165.7
<i>1995—</i>									
January	2.2	34.8	37.0	3.0	23.9	26.9	6.5	60.7	67.2
February	2.1	29.3	31.4	4.2	23.4	27.6	4.7	43.9	48.6
March	2.9	38.8	41.7	4.5	28.6	33.1	4.7	55.3	60.0
<i>March quarter 1995</i>	7.2	102.8	110.1	11.6	76.0	87.6	15.9	160.0	175.9
ROOM OCCUPANCY RATES (per cent)									
<i>March quarter 1994</i>	27.2	45.6	43.8	42.7	47.4	46.4	17.7	38.5	34.6
<i>1995—</i>									
January	29.6	45.4	44.0	25.3	43.5	40.3	19.9	45.7	40.6
February	31.5	41.9	41.0	39.3	47.1	45.8	15.9	36.4	32.4
March	38.6	49.9	48.9	38.0	52.0	49.6	14.2	41.4	36.1
<i>March quarter 1995</i>	33.3	45.9	44.7	34.0	47.6	45.2	16.7	41.3	36.5
GUEST NIGHTS ('000)									
<i>March quarter 1994</i>	10.3	192.4	202.8	23.7	127.9	151.6	30.7	287.8	318.5
<i>1995—</i>									
January	2.9	73.3	76.2	5.3	46.4	51.7	13.5	132.6	146.0
February	2.7	46.5	49.2	6.2	38.1	44.3	7.6	76.4	84.0
March	4.1	64.0	68.1	7.8	47.4	55.2	8.2	96.4	104.5
<i>March quarter 1995</i>	9.7	183.8	193.5	19.3	131.9	151.2	29.3	305.3	334.6
BED OCCUPANCY RATES (per cent)									
<i>March quarter 1994</i>	16.4	27.4	26.5	23.0	27.1	26.4	8.5	23.2	19.8
<i>1995—</i>									
January	14.8	30.3	29.1	17.4	27.4	25.9	10.1	31.5	26.4
February	15.2	21.1	20.7	22.5	24.9	24.5	6.3	19.9	16.7
March	20.3	26.1	25.7	25.6	28.0	27.6	6.2	22.7	18.8
<i>March quarter 1995</i>	16.8	26.0	25.3	21.8	26.8	26.1	7.6	24.9	20.7
GUEST ARRIVALS ('000)									
<i>March quarter 1994</i>	6.5	145.7	152.2	12.6	97.2	109.8	17.2	185.5	202.7
<i>1995—</i>									
January	2.3	56.9	59.1	3.5	34.5	38.0	6.9	77.5	84.4
February	1.2	33.5	34.7	3.9	26.7	30.6	4.4	49.0	53.4
March	1.9	46.4	48.3	4.2	32.9	37.1	4.7	60.2	65.0
<i>March quarter 1995</i>	5.4	136.7	142.1	11.6	94.1	105.7	16.0	186.7	202.8
AVERAGE LENGTH OF STAY (days)									
<i>March quarter 1994</i>	1.6	1.3	1.3	1.9	1.3	1.4	1.8	1.6	1.6
<i>March quarter 1995</i>	1.8	1.3	1.4	1.7	1.4	1.4	1.8	1.6	1.6
TAKINGS FROM ACCOMMODATION (\$'000)									
<i>March quarter 1994</i>	363	5,806	6,169	647	4,336	4,984	906	8,704	9,610
<i>1995—</i>									
January	96	2,138	2,235	134	1,457	1,591	464	4,016	4,480
February	86	1,704	1,791	160	1,392	1,551	247	2,453	2,699
March	125	2,310	2,435	192	1,744	1,936	249	3,048	3,297
<i>March quarter 1995</i>	307	6,153	6,460	486	4,593	5,079	959	9,517	10,476

TABLE 7—HOTELS, MOTELS AND GUEST HOUSES WITH FACILITIES BY STATISTICAL DIVISION,
NEW SOUTH WALES—continued

Particulars	Murrumbidgee (SD)			Murray (SD)			New South Wales		
	Licensed hotels	Motels, etc.	Total	Licensed hotels	Motels, etc.	Total	Licensed hotels	Motels, etc.	Total
ESTABLISHMENTS, CAPACITY AND EMPLOYMENT									
<i>March quarter 1994—</i>									
Establishments	14	75	89	22	133	155	268	1,452	1,720
Guest rooms	261	1,777	2,038	461	3,145	3,606	18,531	38,238	56,769
Bed spaces	630	5,404	6,034	1,214	10,090	11,304	46,582	117,503	164,085
Employment (persons)	137	577	714	229	999	1,228	16,058	14,410	30,468
<i>March quarter 1995—</i>									
Establishments	14	75	89	22	131	153	266	1,448	1,714
Guest rooms	261	1,770	2,031	452	3,185	3,637	18,836	37,791	56,627
Bed spaces	616	5,415	6,031	1,230	10,322	11,552	48,193	116,454	164,647
Employment (persons)	154	588	742	244	1,015	1,259	16,574	14,473	31,047
ROOM NIGHTS OCCUPIED ('000)									
<i>March quarter 1994</i>	10.4	77.0	87.3	14.4	142.5	157.0	1,061.4	1,821.4	2,882.8
<i>1995—</i>									
January	2.9	26.3	29.2	3.9	49.9	53.8	356.1	664.0	1,020.1
February	3.3	23.0	26.3	3.3	39.1	42.4	380.1	548.3	928.4
March	3.9	28.9	32.7	4.5	52.6	57.1	408.8	635.0	1,043.8
<i>March quarter 1995</i>	10.1	78.2	88.3	11.7	141.6	153.3	1,144.9	1,847.3	2,992.3
ROOM OCCUPANCY RATES (per cent)									
<i>March quarter 1994</i>	44.1	48.1	47.6	34.8	50.6	48.6	63.7	53.0	56.5
<i>1995—</i>									
January	35.6	48.0	46.4	27.7	50.6	47.7	61.0	56.8	58.2
February	45.5	46.4	46.3	26.4	43.8	41.7	72.2	51.9	58.6
March	47.7	52.6	52.0	32.2	53.2	50.6	70.3	54.2	59.6
<i>March quarter 1995</i>	42.9	49.1	48.3	28.9	49.4	46.8	67.7	54.4	58.8
GUEST NIGHTS ('000)									
<i>March quarter 1994</i>	14.8	130.7	145.5	23.1	280.6	303.7	1,708.5	3,465.2	5,173.6
<i>1995—</i>									
January	4.3	49.4	53.7	6.8	112.2	119.0	607.9	1,426.3	2,034.1
February	4.5	35.9	40.4	5.3	70.5	75.8	593.9	956.8	1,550.8
March	5.1	45.8	50.9	7.5	96.1	103.6	629.5	1,106.8	1,736.3
<i>March quarter 1995</i>	13.9	131.1	145.0	19.5	278.8	298.3	1,831.2	3,489.9	5,321.1
BED OCCUPANCY RATES (per cent)									
<i>March quarter 1994</i>	26.1	26.9	26.8	21.2	31.1	30.0	40.8	32.8	35.1
<i>1995—</i>									
January	22.8	29.4	28.7	17.7	35.1	33.2	40.7	39.6	39.9
February	25.9	23.7	23.9	15.4	24.4	23.4	44.1	29.4	33.7
March	26.8	27.3	27.2	19.7	30.0	28.9	42.4	30.7	34.1
<i>March quarter 1995</i>	25.1	26.9	26.7	17.7	30.0	28.7	42.4	33.3	36.0
GUEST ARRIVALS ('000)									
<i>March quarter 1994</i>	8.9	94.3	103.2	12.6	168.9	181.5	809.7	1,933.3	2,743.0
<i>1995—</i>									
January	2.8	36.7	39.4	4.5	61.3	65.7	265.8	770.8	1,036.6
February	2.9	25.7	28.6	3.5	42.7	46.2	271.1	540.2	811.3
March	3.3	33.1	36.4	4.7	57.1	61.9	287.1	633.7	920.7
<i>March quarter 1995</i>	8.9	95.6	104.4	12.7	161.1	173.8	824.0	1,944.6	2,768.6
AVERAGE LENGTH OF STAY (days)									
<i>March quarter 1994</i>	1.7	1.4	1.4	1.8	1.7	1.7	2.1	1.8	1.9
<i>March quarter 1995</i>	1.6	1.4	1.4	1.5	1.7	1.7	2.2	1.8	1.9
TAKINGS FROM ACCOMMODATION (\$'000)									
<i>March quarter 1994</i>	440	4,368	4,808	551	8,725	9,276	118,245	131,829	250,074
<i>1995—</i>									
January	126	1,540	1,666	164	3,227	3,390	41,255	51,841	93,096
February	161	1,334	1,496	138	2,403	2,541	47,527	40,042	87,569
March	187	1,662	1,850	193	3,219	3,412	50,479	45,756	96,235
<i>March quarter 1995</i>	475	4,536	5,011	494	8,849	9,343	139,260	137,639	276,899

TABLE 8—HOTELS, MOTELS AND GUEST HOUSES WITH FACILITIES: STATISTICAL DIVISIONS

Statistical Divisions and selected Statistical Local Areas	Establish- ments	Guest rooms	Bed spaces	Employ- ment (persons)	Room nights occupied				Room occupancy rates (per cent)			
					Jan.	Feb.	Mar.	Mar. qtr	Jan.	Feb.	Mar.	Mar. qtr
					SYDNEY STATISTICAL DIVISION							
Ashfield (A)	6	248	709	66	4,755	3,896	4,203	12,854	61.8	56.1	54.7	57.6
Bankstown (C)	10	350	880	196	6,206	6,208	6,965	19,379	57.2	63.3	64.2	61.5
Blacktown (C)	6	236	742	155	3,484	3,228	3,872	10,584	47.6	48.8	52.9	49.8
Blue Mountains (C)	32	1,084	3,079	853	15,605	14,694	16,461	46,760	46.4	48.4	49.0	47.9
Camden (A)	4	126	386	46	860	1,215	1,616	3,691	22.0	34.4	41.4	32.5
Campbelltown (C)	3	122	418	33	1,694	1,548	1,878	5,120	44.8	45.3	49.7	46.6
Gosford (C)	23	810	2,834	678	16,548	13,420	13,723	43,691	65.9	59.2	54.7	59.9
Hawkesbury (C)	12	286	769	154	4,377	4,007	4,374	12,758	51.6	50.0	49.3	50.3
Hornsby (A)	6	206	532	146	3,562	4,066	4,670	12,298	55.8	70.5	73.1	66.3
Lane Cove (A)	7	271	782	152	5,484	6,040	6,503	18,027	65.3	79.6	77.4	73.9
Leichhardt (A)	4	151	413	82	3,741	3,431	3,294	10,466	79.9	81.1	70.4	77.0
Liverpool (C)	6	288	778	81	3,412	3,567	4,000	10,979	38.2	44.2	44.8	42.4
Manly (A)	7	424	1,405	403	11,604	9,952	10,743	32,299	88.3	83.8	81.7	84.6
North Sydney (A)	6	744	1,831	410	13,438	15,954	17,628	47,020	58.3	76.6	76.4	70.2
Parramatta (C)	9	998	2,247	726	18,881	21,164	27,559	67,604	61.0	75.7	89.1	75.3
Penrith (C)	8	354	1,151	233	6,942	5,116	6,263	18,321	63.3	51.6	57.1	57.5
Pittwater (A)	4	78	176	181	1,377	1,622	1,498	4,497	56.9	74.3	62.0	64.1
Randwick (C)	12	766	2,524	490	16,552	15,829	17,350	49,731	69.7	73.8	73.1	72.1
Rockdale (A)	4	644	1,566	540	13,680	15,517	16,998	46,195	68.5	86.1	85.1	79.7
Ryde (C)	5	377	960	331	7,624	8,785	9,535	25,944	65.2	83.2	81.6	76.5
South Sydney (C)	36	4,279	11,214	2,156	99,686	101,604	104,472	305,762	75.2	85.1	79.4	79.7
Strathfield (A)	3	93	265	41	1,584	1,327	1,753	4,664	54.9	51.0	60.8	55.7
Sutherland Shire (A)	10	304	771	256	5,064	4,922	5,299	15,285	53.7	57.8	56.2	55.9
Sydney (C) — Inner	24	6,673	15,736	6,581	149,164	159,682	169,535	478,381	72.1	85.5	82.0	79.7
Sydney (C) — Remainder	13	2,330	6,365	1,416	53,982	56,217	59,445	169,644	74.7	87.1	84.3	81.8
Warringah (A)	7	104	300	170	2,009	2,038	1,795	5,842	62.3	70.0	55.7	62.4
Waverley (A)	7	439	1,048	290	11,563	10,497	10,809	32,869	85.0	85.4	79.4	83.2
Wollondilly (A)	3	64	161	35	395	662	737	1,794	19.9	36.9	37.1	31.1
Woollahra (A)	6	425	952	329	8,837	8,867	8,731	26,435	67.1	74.5	66.3	69.1
Wyong (A)	29	582	1,758	338	10,635	7,611	8,002	26,248	58.9	46.7	44.4	50.1
Balance	20	1,314	3,400	992	21,901	26,225	29,932	78,058	53.8	71.3	73.5	66.0
<i>Sydney (SD)</i>	<i>332</i>	<i>25,170</i>	<i>66,152</i>	<i>18,560</i>	<i>524,646</i>	<i>538,911</i>	<i>579,643</i>	<i>1,643,200</i>	<i>67.3</i>	<i>76.6</i>	<i>74.6</i>	<i>72.7</i>
HUNTER STATISTICAL DIVISION												
Cessnock (C)	22	409	1,197	321	5,379	5,474	6,777	17,630	42.4	47.8	53.5	47.9
Gloucester (A)	5	95	312	56	1,342	1,346	1,761	4,449	45.6	50.6	59.8	52.0
Great Lakes (A)	31	609	2,039	203	13,882	8,581	8,580	31,043	73.5	50.3	45.4	56.6
Lake Macquarie (C)	20	407	1,203	277	6,793	6,648	6,262	19,703	53.8	58.3	49.6	53.8
Maitland (C)	7	191	535	116	2,445	2,832	3,855	9,132	41.3	53.0	65.1	53.1
Muswellbrook (A)	9	225	664	74	3,019	2,789	3,631	9,439	43.3	44.3	52.1	46.6
Newcastle (C) — Inner & Remainder	19	775	2,155	377	11,026	12,711	14,631	38,368	45.9	58.6	60.9	55.0
Port Stephens (A)	28	813	2,677	561	17,970	13,258	14,795	46,023	71.3	58.2	58.7	62.9
Scone (A)	6	115	338	51	1,426	1,456	1,568	4,450	40.0	45.2	44.0	43.0
Singleton (A)	7	242	732	149	4,383	4,333	4,728	13,444	58.4	63.9	63.0	61.7
Balance	5	62	176	16	880	743	664	2,287	45.8	42.8	34.5	41.0
<i>Hunter (SD)</i>	<i>159</i>	<i>3,943</i>	<i>12,028</i>	<i>2,201</i>	<i>68,545</i>	<i>60,171</i>	<i>67,252</i>	<i>195,968</i>	<i>56.1</i>	<i>54.5</i>	<i>55.0</i>	<i>55.2</i>
ILLAWARRA STATISTICAL DIVISION												
Kiama (A)	10	280	974	133	5,847	4,000	4,113	13,960	67.4	51.0	47.4	55.4
Shellharbour (A)	4	84	235	80	1,113	766	674	2,553	42.7	32.6	25.9	33.8
Shoalhaven (C)	54	902	2,857	336	17,501	11,540	11,625	40,666	62.6	45.7	41.6	50.1
Wingecarribee (A)	28	731	1,945	401	8,890	8,722	10,287	27,899	40.2	43.4	45.4	43.0
Wollongong (C)	23	787	2,265	600	13,867	14,187	15,113	43,167	56.8	64.4	61.9	60.9
<i>Illawarra (SD)</i>	<i>119</i>	<i>2,784</i>	<i>8,276</i>	<i>1,550</i>	<i>47,218</i>	<i>39,215</i>	<i>41,812</i>	<i>128,245</i>	<i>55.1</i>	<i>50.6</i>	<i>48.4</i>	<i>51.4</i>

For footnotes see end of table.

AND SELECTED STATISTICAL LOCAL AREAS (s), NEW SOUTH WALES, MARCH QUARTER 1995

<i>Guest nights</i>				<i>Guest arrivals</i>				<i>Takings from accommodation (\$'000)</i>			
<i>Jan.</i>	<i>Feb.</i>	<i>Mar.</i>	<i>Mar. qtr</i>	<i>Jan.</i>	<i>Feb.</i>	<i>Mar.</i>	<i>Mar. qtr</i>	<i>Jan.</i>	<i>Feb.</i>	<i>Mar.</i>	<i>Mar. qtr</i>
SYDNEY STATISTICAL DIVISION											
9,949	6,891	7,473	24,313	5,911	4,605	4,817	15,333	325	266	294	884
9,534	8,972	9,590	28,096	6,841	6,160	6,852	19,853	526	522	591	1,639
8,824	6,258	7,287	22,369	6,078	4,325	3,647	14,050	240	204	282	726
35,494	26,292	29,649	91,435	16,213	13,251	15,379	44,843	1,650	1,540	1,846	5,037
1,646	2,237	3,279	7,162	1,313	1,829	2,739	5,881	46	62	76	184
2,997	2,773	3,288	9,058	2,058	1,817	2,409	6,284	121	107	134	363
40,283	24,644	21,956	86,883	14,121	10,913	12,046	37,080	1,818	1,415	1,406	4,639
8,606	7,354	7,703	23,663	3,484	3,333	4,002	10,819	297	282	303	882
6,311	5,831	6,770	18,912	2,897	2,962	3,462	9,321	320	375	419	1,113
9,355	8,863	9,692	27,910	4,656	4,474	5,014	14,144	468	550	593	1,611
8,519	5,958	5,896	20,373	3,812	3,309	3,265	10,386	332	290	273	895
7,010	6,577	7,982	21,569	3,772	3,486	3,950	11,208	234	244	255	733
24,063	17,599	17,372	59,034	5,063	4,597	4,750	14,410	1,592	1,354	1,424	4,370
20,064	20,217	21,507	61,788	5,284	6,881	7,606	19,771	1,546	1,960	2,178	5,684
27,992	27,528	37,328	92,848	13,956	13,754	17,107	44,817	1,519	1,886	2,674	6,079
14,521	9,319	11,658	35,498	4,582	4,145	5,032	13,759	597	420	531	1,548
2,322	2,366	2,127	6,815	1,330	1,560	1,424	4,314	165	204	180	549
31,457	26,128	27,898	85,483	11,107	9,760	11,442	32,309	1,590	1,433	1,532	4,555
24,990	23,923	26,176	75,089	17,365	16,475	17,564	51,404	1,414	1,635	1,483	4,533
12,658	12,775	13,423	38,856	3,395	3,578	4,040	11,013	901	1,070	1,163	3,135
188,742	181,168	184,733	554,643	68,517	74,978	72,242	215,737	8,641	9,277	9,431	27,349
2,543	1,971	2,602	7,116	1,546	1,303	1,843	4,692	124	103	130	356
9,736	7,747	8,394	25,877	3,286	3,603	3,673	10,562	397	407	420	1,223
249,134	257,310	270,001	776,445	105,322	110,045	116,622	331,989	22,119	26,190	27,580	75,889
96,225	91,921	96,168	284,314	33,621	34,378	34,864	102,863	5,443	5,815	6,258	17,515
3,660	3,106	2,879	9,645	1,667	1,581	1,412	4,660	121	116	102	339
22,701	17,885	18,075	58,661	5,091	4,993	5,108	15,192	1,117	958	975	3,050
678	1,144	1,191	3,013	502	658	802	1,962	24	41	52	116
17,330	14,207	14,834	46,371	5,928	5,461	5,813	17,202	1,034	1,124	1,099	3,257
25,097	15,192	13,995	54,284	13,066	8,330	8,696	30,092	1,056	785	800	2,642
32,848	35,059	39,827	107,734	18,044	19,665	22,440	60,149	1,916	2,441	2,881	7,237
955,289	879,215	930,753	2,765,257	389,828	386,209	410,062	1,186,099	57,691	63,076	67,364	188,131
HUNTER STATISTICAL DIVISION											
10,904	9,747	12,459	33,110	6,934	6,194	7,424	20,552	564	632	762	1,959
2,690	2,150	2,939	7,779	1,315	1,237	1,805	4,357	99	75	95	269
36,472	17,065	16,816	70,353	15,099	8,957	9,553	33,609	978	424	432	1,835
12,111	9,994	9,307	31,412	7,245	6,153	6,161	19,559	442	465	440	1,348
3,984	4,378	5,787	14,149	2,957	3,042	4,024	10,023	158	185	253	596
5,010	4,477	5,509	14,996	3,532	2,533	3,289	9,354	164	150	195	509
18,607	18,482	21,330	58,419	10,602	10,766	12,271	33,639	833	994	1,128	2,955
46,589	26,416	27,726	100,731	18,601	12,651	14,233	45,485	2,008	1,181	1,188	4,377
2,444	2,286	2,768	7,498	1,866	1,531	2,129	5,526	81	66	85	231
7,598	6,470	7,083	21,151	4,028	3,301	4,273	11,602	312	309	329	950
1,764	1,232	1,162	4,158	1,528	763	938	3,229	39	29	30	97
148,173	102,697	112,886	363,756	73,707	57,128	66,100	196,935	5,679	4,511	4,938	15,127
ILLAWARRA STATISTICAL DIVISION											
13,715	8,441	8,061	30,217	9,123	6,146	6,106	21,375	442	264	262	969
2,061	1,203	1,203	4,467	1,109	687	710	2,506	58	40	36	134
41,314	22,728	21,402	85,444	20,391	13,836	13,098	47,325	1,305	726	717	2,747
17,102	15,035	17,965	50,102	11,010	9,576	11,196	31,782	873	868	1,045	2,786
24,583	21,626	23,824	70,033	12,597	12,710	13,340	38,647	1,232	1,236	1,298	3,765
98,775	69,033	72,455	240,263	54,230	42,955	44,450	141,635	3,909	3,134	3,358	10,401

TABLE 8 — HOTELS, MOTELS AND GUEST HOUSES WITH FACILITIES: STATISTICAL DIVISIONS

Statistical Divisions and selected Statistical Local Areas	Establish- ments	Guest rooms	Bed spaces	Employ- ment (persons)	Room nights occupied				Room occupancy rates (per cent)			
					Jan.	Feb.	Mar.	Mar. qtr	Jan.	Feb.	Mar.	Mar. qtr
RICHMOND — TWEED STATISTICAL DIVISION												
Ballina (A)	26	479	1,515	169	10,010	7,041	7,899	24,950	67.4	52.5	53.2	57.9
Byron (A)	24	344	1,175	130	7,777	4,902	5,045	17,724	72.9	50.9	47.3	57.2
Casino (A)	5	102	307	36	1,101	1,350	1,334	3,785	34.8	47.3	42.2	41.2
Lismore (C)	12	274	827	66	3,447	3,279	3,490	10,216	40.6	42.7	41.1	41.4
Tweed (A) Parts A & B	37	715	2,266	230	12,008	8,059	9,488	29,555	54.2	40.3	42.8	45.9
Balance	4	44	133	15	908	612	588	2,108	66.6	49.7	43.1	53.2
<i>Richmond — Tweed (SD)</i>	<i>108</i>	<i>1,958</i>	<i>6,223</i>	<i>646</i>	<i>35,251</i>	<i>25,243</i>	<i>27,844</i>	<i>88,338</i>	<i>58.1</i>	<i>46.0</i>	<i>45.9</i>	<i>50.1</i>
MID-NORTH COAST STATISTICAL DIVISION												
Bellingen (A)	6	90	271	37	1,540	969	952	3,461	55.2	38.5	34.1	42.7
Coffs Harbour (C)	52	1,459	4,866	821	35,350	22,206	23,492	81,048	78.2	54.4	51.9	61.7
Grafton (C)	15	335	900	116	5,708	4,468	5,508	15,684	55.0	47.6	53.0	52.0
Hastings (A)	45	955	3,077	417	22,384	13,824	15,723	51,931	75.6	51.7	53.1	60.4
Kempsey (A)	17	374	1,120	123	6,403	3,572	4,581	14,556	55.2	34.1	39.5	43.2
Maclean (A)	13	178	619	48	3,298	1,539	1,988	6,825	59.8	30.9	36.0	42.6
Nambucca (A)	13	227	741	79	4,588	2,502	3,215	10,305	65.2	39.4	45.7	50.4
Taree, Greater (C)	27	460	1,415	126	8,764	5,450	6,760	20,974	61.5	42.3	47.4	50.7
Balance	4	69	195	67	1,595	1,196	1,305	4,096	74.6	61.9	61.0	66.0
<i>Mid-North Coast (SD)</i>	<i>192</i>	<i>4,147</i>	<i>13,204</i>	<i>1,834</i>	<i>89,630</i>	<i>55,726</i>	<i>63,524</i>	<i>208,880</i>	<i>69.7</i>	<i>48.0</i>	<i>49.4</i>	<i>56.0</i>
NORTHERN STATISTICAL DIVISION												
Armidale (C)	17	423	1,359	162	6,752	6,382	6,996	20,130	51.5	53.9	53.4	52.9
Dumaresq (A)	3	42	142	22	733	648	663	2,044	56.3	55.1	50.9	54.1
Glen Innes (A)	10	199	582	73	2,998	2,254	2,942	8,194	48.6	40.5	47.7	45.8
Gunnedah (A)	7	139	424	36	2,089	1,615	2,126	5,830	48.5	41.5	49.3	46.6
Inverell (A) Parts A & B	6	131	348	48	1,581	1,685	1,850	5,116	38.9	45.9	45.6	43.4
Moree Plains (A)	15	410	1,220	88	4,418	3,869	5,061	13,348	34.8	33.7	39.8	36.2
Narrabri (A)	11	190	588	56	2,723	2,382	2,839	7,944	46.2	44.8	48.2	46.5
Tarnworth (C)	29	760	2,450	305	13,985	9,828	11,903	35,716	59.4	46.2	50.5	52.2
Tenterfield (A)	8	156	452	61	2,323	1,701	2,036	6,060	48.0	38.9	42.1	43.2
Uralla (A)	3	45	116	19	608	433	606	1,647	43.6	34.4	43.4	40.7
Balance	15	190	541	55	2,416	1,904	2,125	6,445	41.0	35.8	36.1	37.7
<i>Northern (SD)</i>	<i>124</i>	<i>2,685</i>	<i>8,222</i>	<i>925</i>	<i>40,626</i>	<i>32,701</i>	<i>39,147</i>	<i>112,474</i>	<i>48.8</i>	<i>43.5</i>	<i>47.0</i>	<i>46.5</i>
NORTH WESTERN AND FAR WEST STATISTICAL DIVISIONS												
Bogan (A)	5	114	300	38	1,088	980	1,276	3,344	30.8	30.7	36.1	32.6
Bourke (A)	4	63	180	15	956	1,090	1,205	3,251	49.0	61.8	61.7	57.3
Broken Hill (C)	13	322	918	85	3,088	3,014	4,923	11,025	30.9	33.4	49.3	38.0
Central Darling (A)	3	38	110	9	362	377	376	1,115	30.7	35.4	31.9	32.6
Cobar (A)	7	173	501	91	3,073	2,987	3,458	9,518	57.3	61.7	64.5	61.1
Coonabarabran (A)	11	272	952	97	4,621	2,379	3,016	10,016	54.8	31.2	35.8	40.9
Coonamble (A)	3	51	133	10	417	525	517	1,459	26.4	36.8	32.7	31.8
Dubbo (C)	33	843	2,754	351	13,822	11,443	14,913	40,178	55.1	49.5	57.1	54.0
Gilgandra (A)	9	147	478	31	2,188	1,083	1,321	4,592	48.0	26.3	29.0	34.7
Mudgee (A)	13	332	1,117	159	3,301	3,480	5,013	11,794	32.1	37.4	48.7	39.5
Narramine (A)	5	79	218	40	1,222	787	851	2,860	49.9	35.6	34.7	40.2
Walgett (A)	7	168	467	66	1,418	1,792	2,655	5,865	27.2	38.1	51.0	38.8
Wellington (A)	5	73	212	15	737	783	1,015	2,535	32.6	38.3	44.9	38.6
Balance	6	75	209	24	714	671	1,127	2,512	30.7	32.0	48.5	37.2
<i>North Western (SD) and Far West (SD)</i>	<i>124</i>	<i>2,750</i>	<i>8,549</i>	<i>1,031</i>	<i>37,007</i>	<i>31,391</i>	<i>41,666</i>	<i>110,064</i>	<i>44.0</i>	<i>41.0</i>	<i>48.9</i>	<i>44.7</i>

For footnotes see end of table.

AND SELECTED STATISTICAL LOCAL AREAS (a), NEW SOUTH WALES, MARCH QUARTER 1995 —continued

Guest nights				Guest arrivals				Takings from accommodation (\$'000)			
Jan.	Feb.	Mar.	Mar. qtr	Jan.	Feb.	Mar.	Mar. qtr	Jan.	Feb.	Mar.	Mar. qtr
RICHMOND — TWEED STATISTICAL DIVISION											
22,352	11,554	13,197	47,103	14,423	8,102	8,864	31,389	684	391	423	1,498
18,002	9,724	9,798	37,524	8,882	5,731	5,650	20,263	717	354	357	1,428
1,946	2,047	1,927	5,920	1,309	1,141	1,297	3,747	51	60	62	173
5,582	4,621	4,802	15,005	3,458	3,133	3,185	9,776	198	176	186	560
24,777	14,324	17,257	56,358	12,633	8,009	9,434	30,076	682	381	464	1,527
2,083	1,095	996	4,174	1,154	727	669	2,550	38	23	25	87
74,742	43,365	47,977	166,084	41,859	26,843	29,099	97,801	2,370	1,385	1,516	5,272
MID-NORTH COAST STATISTICAL DIVISION											
3,580	1,832	1,808	7,220	2,973	1,311	1,477	5,761	92	52	53	197
98,083	50,233	53,711	202,027	53,981	27,946	28,960	110,887	3,594	1,600	1,617	6,812
9,992	6,193	7,811	23,996	7,336	4,779	5,598	17,713	255	196	258	709
57,092	26,196	29,789	113,077	29,851	14,614	16,267	60,732	1,957	868	992	3,817
14,581	6,447	8,206	29,234	11,256	5,104	5,979	22,339	368	168	212	748
7,770	2,865	3,591	14,226	3,786	1,749	2,130	7,665	201	75	93	369
10,672	4,661	6,364	21,697	5,787	3,130	3,597	12,514	278	124	159	561
20,231	9,980	12,660	42,871	15,063	7,954	9,702	32,719	483	264	339	1,086
3,296	2,263	2,549	8,108	394	305	409	1,108	373	212	230	816
225,297	110,670	126,489	462,456	130,427	66,892	74,119	271,438	7,601	3,560	3,954	15,115
NORTHERN STATISTICAL DIVISION											
14,661	10,449	11,556	36,666	12,322	7,452	8,941	28,715	429	389	428	1,246
1,523	1,145	1,258	3,926	1,219	868	1,037	3,124	44	38	40	121
5,638	3,254	4,493	13,385	4,457	2,841	3,739	11,037	178	121	165	464
4,304	2,693	3,492	10,489	3,267	1,947	2,603	7,817	110	82	108	300
2,749	2,529	2,450	7,728	2,038	1,784	2,078	5,900	81	88	95	265
9,116	5,987	7,979	23,082	6,679	4,044	5,250	15,973	211	179	238	628
5,074	3,571	4,244	12,889	4,455	2,845	3,518	10,818	145	129	153	427
31,616	15,772	19,701	67,089	18,077	11,269	14,815	44,161	1,042	628	743	2,413
4,955	2,846	3,480	11,281	3,779	2,322	3,138	9,239	122	80	100	301
1,040	649	1,089	2,778	680	377	642	1,699	21	12	18	50
4,470	3,251	3,585	11,306	2,811	2,046	2,468	7,325	102	80	87	269
85,146	52,146	63,327	200,619	59,784	37,795	48,229	145,808	2,483	1,826	2,175	6,484
NORTH WESTERN AND FAR WEST STATISTICAL DIVISIONS											
1,751	1,384	1,819	4,954	1,572	1,315	1,757	4,644	55	46	65	165
1,346	1,496	1,656	4,498	776	773	994	2,543	49	55	61	165
5,928	4,343	7,959	18,230	3,924	2,466	5,308	11,698	201	185	298	684
640	568	617	1,825	511	472	553	1,536	19	18	19	56
3,705	3,433	4,122	11,260	2,411	1,597	1,860	5,868	151	157	194	502
12,414	4,393	6,076	22,883	11,818	4,023	5,611	21,452	291	127	162	580
645	729	727	2,101	453	425	533	1,411	18	22	23	63
31,795	19,289	24,945	76,029	25,166	14,408	18,107	57,681	930	704	934	2,567
4,867	2,029	2,590	9,486	4,549	1,947	2,425	8,921	95	44	58	197
6,360	5,634	8,549	20,543	3,429	3,348	4,946	11,723	221	232	330	783
1,938	1,240	1,367	4,545	1,121	767	1,016	2,904	56	35	41	132
2,366	2,503	4,265	9,134	1,550	1,478	2,656	5,684	76	88	146	310
1,358	1,372	1,733	4,463	1,065	1,011	1,382	3,458	36	40	52	128
1,129	817	1,638	3,584	797	671	1,131	2,599	36	37	53	126
76,242	49,230	68,063	193,535	59,142	34,701	48,279	142,122	2,235	1,791	2,435	6,460

TABLE 8 — HOTELS, MOTELS AND GUEST HOUSES WITH FACILITIES: STATISTICAL DIVISIONS

Statistical Divisions and selected Statistical Local Areas	Establish- ments	Guest rooms	Bed spaces	Employ- ment (persons)	Room nights occupied				Room occupancy rates (per cent)			
					Jan.	Feb.	Mar.	Mar. qtr	Jan.	Feb.	Mar.	Mar. qtr
CENTRAL WEST STATISTICAL DIVISION												
Bathurst (C)	14	409	1,266	192	4,584	5,438	7,185	17,207	36.2	47.5	56.7	46.7
Bland (A)	13	273	876	69	3,540	2,839	3,062	9,441	41.8	37.1	36.2	38.4
Cabonne (A) Pts A, B & C	3	36	113	9	352	376	415	1,143	31.5	37.3	37.2	35.3
Cowra (A)	10	182	532	82	2,415	1,794	3,029	7,238	42.8	35.2	53.7	44.2
Forbes (A)	7	155	428	55	2,016	1,518	2,057	5,591	42.0	35.0	42.8	40.1
Lachlan (A)	5	68	178	20	541	678	684	1,903	25.7	35.6	32.4	31.1
Lithgow, Greater (C)	6	150	454	66	2,066	2,277	2,780	7,123	44.4	54.2	59.8	52.8
Oberon (A)	5	110	360	112	1,513	1,109	1,381	4,003	44.4	36.0	40.5	40.4
Orange (C)	11	437	1,238	220	4,480	6,523	6,377	17,380	33.1	53.3	47.1	44.2
Parkes (A)	14	280	841	108	4,610	4,266	5,207	14,083	53.1	54.4	60.0	55.9
Balance	3	54	160	10	782	781	918	2,481	46.7	51.7	54.8	51.0
<i>Central West (SD)</i>	<i>91</i>	<i>2,154</i>	<i>6,446</i>	<i>943</i>	<i>26,899</i>	<i>27,599</i>	<i>33,095</i>	<i>87,593</i>	<i>40.3</i>	<i>45.8</i>	<i>49.6</i>	<i>45.2</i>
SOUTH EASTERN STATISTICAL DIVISION												
Bega Valley (A)	43	848	2,643	282	17,667	10,956	14,460	43,083	67.2	46.1	55.0	56.5
Cooma — Monaro (A)	15	370	1,070	87	3,157	2,701	4,744	10,602	27.5	26.1	41.4	31.8
Eurobodalla (A)	39	782	2,377	270	16,434	10,863	11,754	39,051	67.8	49.6	48.5	55.5
Goulburn (C)	14	381	1,025	127	5,335	4,616	6,187	16,138	45.2	43.3	52.4	47.1
Queanbeyan (C)	16	480	1,417	118	7,980	6,942	8,695	23,617	53.6	51.7	58.4	54.7
Snowy River (A) (b)	63	1,809	7,261	213	7,933	3,975	4,284	16,192	14.4	7.8	7.6	10.0
Tallaganda (A)	4	41	134	14	556	340	489	1,385	43.7	29.6	38.5	37.5
Yass (A)	9	199	605	67	2,883	2,335	2,713	7,931	46.7	41.9	44.0	44.3
Young (A)	7	129	372	43	1,364	1,668	1,716	4,748	34.1	46.2	42.9	40.9
Balance	13	329	1,060	135	3,931	4,250	4,969	13,150	38.5	46.1	48.7	44.4
<i>South Eastern (SD)</i>	<i>223</i>	<i>5,368</i>	<i>17,964</i>	<i>1,356</i>	<i>67,240</i>	<i>48,646</i>	<i>60,011</i>	<i>175,897</i>	<i>40.6</i>	<i>32.4</i>	<i>36.1</i>	<i>36.5</i>
MURRUMBIDGEE STATISTICAL DIVISION												
Carrathool (A)	3	34	110	10	241	348	459	1,048	22.9	36.6	43.5	34.2
Cootamundra (A)	4	80	222	24	948	831	1,136	2,915	38.2	37.1	45.8	40.5
Griffith (C)	9	268	754	90	3,577	4,939	5,789	14,305	43.1	65.8	69.7	59.3
Gundagai (A)	6	111	352	39	2,256	1,511	2,115	5,882	65.6	48.6	61.5	58.9
Hay (A)	7	146	435	53	3,082	1,611	2,032	6,725	68.1	39.4	44.9	51.2
Narrandera (A)	11	237	744	66	2,921	1,836	2,717	7,474	39.8	27.7	37.0	35.0
Temora (A)	4	47	118	16	528	547	785	1,860	36.2	41.6	53.9	44.0
Turnut (A)	9	185	578	66	2,507	1,944	2,528	6,979	43.7	37.5	44.1	41.9
Wagga Wagga (C)	26	757	2,254	317	10,765	10,429	12,468	33,662	45.9	49.2	53.1	49.4
Balance	10	166	464	61	2,407	2,350	2,685	7,442	46.8	50.6	52.2	49.8
<i>Murrumbidgee (SD)</i>	<i>89</i>	<i>2,031</i>	<i>6,031</i>	<i>742</i>	<i>29,232</i>	<i>26,346</i>	<i>32,714</i>	<i>88,292</i>	<i>46.4</i>	<i>46.3</i>	<i>52.0</i>	<i>48.3</i>
MURRAY STATISTICAL DIVISION												
Albury (C)	39	1,355	4,035	532	21,372	18,204	24,044	63,620	50.9	48.0	57.2	52.2
Bairnald (A)	7	105	339	23	1,337	860	1,044	3,241	41.1	29.3	32.1	34.3
Berrigan (A)	24	448	1,440	125	4,896	3,834	5,485	14,215	35.3	30.6	39.5	35.3
Corowa (A)	23	434	1,412	140	8,120	4,954	7,733	20,807	60.4	40.8	57.5	53.3
Deniliquin (A)	11	210	696	59	2,278	2,458	3,661	8,397	35.0	41.8	56.2	44.4
Holbrook (A)	7	111	337	32	1,537	1,120	1,336	3,993	44.7	36.0	38.8	40.0
Hume (A)	4	190	715	52	2,003	757	1,511	4,271	34.0	14.2	25.7	25.0
Jerilderie (A)	5	53	153	20	565	605	708	1,878	34.4	40.8	43.1	39.4
Murray (A)	10	278	1,053	134	5,742	4,960	4,932	15,634	66.6	63.7	57.2	62.5
Wakool (A)	10	189	581	50	2,593	2,098	3,184	7,875	44.3	39.6	54.3	46.3
Wentworth (A)	10	207	622	71	2,574	2,079	2,679	7,332	40.1	35.9	41.7	39.4
Balance	3	57	169	21	798	499	757	2,054	45.2	31.3	42.8	40.0
<i>Murray (SD)</i>	<i>153</i>	<i>3,637</i>	<i>11,552</i>	<i>1,259</i>	<i>53,815</i>	<i>42,428</i>	<i>57,074</i>	<i>153,317</i>	<i>47.7</i>	<i>41.7</i>	<i>50.6</i>	<i>46.8</i>
NEW SOUTH WALES												
<i>NEW SOUTH WALES</i>	<i>1,714</i>	<i>56,627</i>	<i>164,647</i>	<i>31,047</i>	<i>1,020,109</i>	<i>928,377</i>	<i>1,043,782</i>	<i>2,992,268</i>	<i>58.2</i>	<i>58.6</i>	<i>59.6</i>	<i>58.8</i>

(a) Statistical Local Areas are not shown separately in this table when data for them are confidential or nil. Data for these are aggregated and shown as the Balance of the particular Statistical Division. (b) Snow field resorts are included continuously as capacity (potentially) available irrespective of any off-season closures. The average occupancy rates of establishments in Snowy River (S) actually remaining open during the snow fields off season, therefore, are significantly higher than the overall rates published.

AND SELECTED STATISTICAL LOCAL AREAS (a), NEW SOUTH WALES, MARCH QUARTER 1995 —continued

Guest nights				Guest arrivals				Takings from accommodation (\$'000)			
Jan.	Feb.	Mar.	Mar. qtr	Jan.	Feb.	Mar.	Mar. qtr	Jan.	Feb.	Mar.	Mar. qtr
CENTRAL WEST STATISTICAL DIVISION											
8,866	9,053	12,896	30,815	5,761	6,249	8,121	20,131	306	349	500	1,155
7,522	4,740	5,318	17,580	6,917	3,983	4,325	15,225	197	145	162	504
527	586	701	1,814	278	298	525	1,101	15	16	22	53
4,965	2,797	5,031	12,793	3,511	2,334	3,864	9,709	139	100	166	405
3,956	2,487	3,134	9,577	3,548	2,118	2,706	8,372	118	87	118	323
912	971	932	2,815	609	631	627	1,867	26	31	31	88
3,088	3,343	4,003	10,434	2,103	2,448	2,570	7,121	125	137	156	417
3,290	1,959	2,599	7,848	1,748	1,141	1,504	4,393	109	76	96	281
8,123	10,470	11,217	29,810	5,405	6,367	7,426	19,198	288	379	409	1,076
9,327	6,866	8,154	24,347	7,555	4,501	4,856	16,912	238	199	236	673
1,155	992	1,256	3,403	525	518	612	1,655	32	32	39	103
<i>51,731</i>	<i>44,264</i>	<i>55,241</i>	<i>151,236</i>	<i>37,960</i>	<i>30,588</i>	<i>37,136</i>	<i>105,684</i>	<i>1,591</i>	<i>1,551</i>	<i>1,936</i>	<i>5,079</i>
SOUTH EASTERN STATISTICAL DIVISION											
42,327	19,947	25,944	88,218	22,035	12,293	15,346	49,674	1,252	559	700	2,510
6,357	4,638	7,653	18,648	4,268	3,314	4,340	11,922	195	153	264	612
35,583	18,650	20,146	74,379	19,471	11,400	12,407	43,278	1,156	609	650	2,415
10,520	7,678	10,312	28,510	8,082	5,532	7,400	21,014	299	250	337	886
15,193	10,720	14,105	40,018	8,831	6,895	8,259	23,985	447	382	490	1,318
19,625	8,449	8,816	36,890	9,018	4,181	4,743	17,942	618	260	281	1,159
1,302	693	913	2,908	1,007	565	750	2,322	29	17	26	72
6,223	3,812	4,942	14,977	5,092	2,708	3,654	11,454	166	127	162	455
2,296	2,431	2,560	7,287	1,720	1,723	2,023	5,466	80	101	102	283
6,611	6,959	9,147	22,717	4,898	4,763	6,065	15,726	239	241	286	766
<i>146,037</i>	<i>83,977</i>	<i>104,538</i>	<i>334,552</i>	<i>84,422</i>	<i>53,374</i>	<i>64,987</i>	<i>202,783</i>	<i>4,480</i>	<i>2,699</i>	<i>3,297</i>	<i>10,476</i>
MURRUMBIDGEE STATISTICAL DIVISION											
544	541	708	1,793	300	259	367	926	9	11	15	35
1,724	1,254	1,810	4,788	1,377	1,009	1,367	3,753	57	49	67	174
5,456	6,712	8,244	20,412	3,590	4,441	5,262	13,293	183	281	318	782
5,371	2,972	4,077	12,420	4,942	2,669	3,666	11,277	136	76	108	319
6,182	2,705	3,494	12,381	5,052	2,385	2,868	10,305	169	86	107	363
6,534	3,022	4,981	14,537	5,767	2,568	4,178	12,513	158	86	131	375
947	889	1,287	3,123	554	581	709	1,844	26	26	36	88
4,779	2,921	3,817	11,517	3,171	1,955	2,809	7,935	145	100	140	385
18,402	16,203	18,803	53,408	12,319	10,687	12,981	35,987	664	663	792	2,119
3,793	3,169	3,699	10,661	2,377	2,043	2,195	6,615	118	118	136	372
<i>53,732</i>	<i>40,388</i>	<i>50,920</i>	<i>145,040</i>	<i>39,449</i>	<i>28,597</i>	<i>36,402</i>	<i>104,448</i>	<i>1,666</i>	<i>1,496</i>	<i>1,850</i>	<i>5,011</i>
MURRAY STATISTICAL DIVISION											
44,034	29,510	40,712	114,256	26,900	18,227	24,923	70,050	1,422	1,180	1,548	4,150
2,982	1,449	1,872	6,303	2,617	1,061	1,401	5,079	74	39	49	162
9,565	6,842	9,747	26,154	4,998	3,799	5,067	13,864	271	200	294	766
18,872	9,554	15,462	43,888	8,010	5,542	8,262	21,814	493	272	456	1,221
3,850	3,882	6,455	14,187	2,932	2,993	4,641	10,566	114	112	176	403
3,381	2,147	2,533	8,061	2,817	1,683	2,054	6,554	76	50	61	187
6,898	1,734	3,847	12,479	2,456	864	1,982	5,302	142	46	88	276
1,105	1,060	1,153	3,318	836	724	999	2,559	34	29	36	99
16,060	10,925	9,974	36,959	6,282	5,544	5,488	17,314	473	388	402	1,263
5,535	4,087	6,108	15,730	3,514	2,796	3,580	9,890	136	110	163	409
5,176	3,771	4,598	13,545	3,112	2,298	2,633	8,043	110	86	99	296
1,502	805	1,161	3,468	1,269	666	836	2,771	45	27	39	110
<i>118,960</i>	<i>75,766</i>	<i>103,622</i>	<i>298,348</i>	<i>65,743</i>	<i>46,197</i>	<i>61,866</i>	<i>173,806</i>	<i>3,390</i>	<i>2,541</i>	<i>3,412</i>	<i>9,343</i>
NEW SOUTH WALES											
<i>2,034,124</i>	<i>1,550,751</i>	<i>1,736,271</i>	<i>5,321,146</i>	<i>1,036,551</i>	<i>811,279</i>	<i>920,729</i>	<i>2,768,559</i>	<i>93,096</i>	<i>87,569</i>	<i>96,235</i>	<i>276,899</i>

TABLE 9 — HOLIDAY FLATS, UNITS AND HOUSES BY STATISTICAL DIVISION,
NEW SOUTH WALES

Particulars	Sydney (SD)			Hunter (SD)			Illawarra (SD)			Richmond - Tweed (SD)		
	Real estate agents	Other letting entities	Total	Real estate agents	Other letting entities	Total	Real estate agents	Other letting entities	Total	Real estate agents	Other letting entities	Total
LETTING ENTITIES, CAPACITY AND EMPLOYMENT												
March quarter 1994—												
Letting entities	17	44	61	21	11	32	14	15	29	23	22	45
Flats, units and houses												
Single bedroom	57	770	827	82	14	96	23	54	77	37	49	86
Multiple bedroom	923	394	1,317	1,835	78	1,913	538	83	621	621	200	821
Total flats, units and houses	980	1,164	2,144	1,917	92	2,009	561	137	698	658	249	907
Bed spaces	5,316	3,975	9,291	9,435	442	9,877	3,063	657	3,720	3,264	1,134	4,398
Employment (persons) (a)	—	290	290	—	26	26	—	57	57	—	72	72
March quarter 1995—												
Letting entities	18	43	61	23	13	36	15	16	31	26	21	47
Flats, units and houses												
Single bedroom	65	783	848	89	12	101	17	63	80	42	127	169
Multiple bedroom	925	458	1,383	1,930	112	2,042	569	78	647	687	234	921
Total flats, units and houses	990	1,241	2,231	2,019	124	2,143	586	141	727	729	361	1,090
Bed spaces	5,435	4,255	9,690	10,047	677	10,724	3,063	642	3,705	3,498	1,562	5,060
Employment (persons) (a)	—	254	254	—	50	50	—	56	56	—	135	135
UNIT NIGHTS OCCUPIED ('000)												
March quarter 1994	32.4	78.7	111.1	88.0	5.0	93.0	20.2	6.4	26.6	32.7	13.1	45.7
1995—												
January	18.5	30.7	49.2	47.4	2.8	50.1	13.1	3.1	16.2	16.7	8.3	25.0
February	7.2	26.3	33.5	26.6	2.0	28.6	4.8	1.9	6.7	9.4	4.7	14.1
March	5.6	28.4	34.1	20.8	2.0	22.8	3.0	2.0	5.0	8.9	4.3	13.1
March quarter 1995	31.4	85.5	116.9	94.7	6.8	101.6	20.9	7.0	27.9	34.9	17.3	52.2
UNIT OCCUPANCY RATES (per cent)												
March quarter 1994	36.7	75.2	57.6	51.0	60.4	51.5	40.0	52.0	42.4	55.2	58.3	56.0
1995—												
January	60.3	79.9	71.2	75.7	71.9	75.5	72.3	70.7	72.0	73.8	74.6	74.0
February	26.1	75.7	53.7	47.0	59.3	47.7	29.9	47.9	33.5	46.1	46.3	46.1
March	18.4	73.9	49.3	33.2	53.1	34.3	18.0	46.6	23.9	39.3	38.1	38.9
March quarter 1995	35.3	76.5	58.2	52.1	61.5	52.7	41.1	55.3	43.9	53.3	53.2	53.2
UNIT LETTINGS ('000)												
March quarter 1994	3.9	18.4	22.3	10.8	0.9	11.7	2.6	1.5	4.1	3.3	2.3	5.5
1995—												
January	2.1	8.1	10.2	5.1	0.7	5.7	1.5	0.6	2.1	1.6	1.5	3.1
February	0.9	6.9	7.8	3.4	0.5	3.9	0.9	0.5	1.4	1.0	1.0	2.0
March	0.8	7.1	7.9	2.5	0.6	3.1	0.5	0.5	1.0	1.0	1.0	2.0
March quarter 1995	3.8	22.1	25.9	11.0	1.8	12.8	2.9	1.6	4.5	3.5	3.5	7.0
AVERAGE LENGTH OF STAY (days)												
March quarter 1994	8.3	4.3	5.0	8.2	5.3	7.9	7.7	4.4	6.5	10.0	5.7	8.2
1995—												
January	8.7	3.8	4.8	9.4	4.1	8.7	8.9	5.2	7.8	10.6	5.7	8.2
February	8.0	3.8	4.3	7.9	3.8	7.3	5.5	3.8	4.9	9.8	4.6	7.1
March	7.4	4.0	4.3	8.2	3.4	7.3	5.7	4.1	4.9	8.9	4.3	6.6
March quarter 1995	8.3	3.9	4.5	8.6	3.8	7.9	7.3	4.4	6.2	9.9	5.0	7.4
TAKINGS FROM ACCOMMODATION (\$'000)												
March quarter 1994	2,315	7,564	9,879	4,406	344	4,750	1,359	389	1,748	1,735	934	2,669
1995—												
January	1,857	3,205	5,062	3,126	241	3,368	1,240	216	1,456	1,145	835	1,980
February	429	2,726	3,155	1,097	154	1,251	294	105	399	405	305	710
March	326	2,871	3,197	860	163	1,023	158	109	267	353	284	636
March quarter 1995	2,612	8,802	11,414	5,083	559	5,642	1,692	431	2,122	1,903	1,423	3,326

For footnotes see end of table.

**TABLE 9 — HOLIDAY FLATS, UNITS AND HOUSES BY STATISTICAL DIVISION,
NEW SOUTH WALES—continued**

Particulars	Mid - North Coast (SD)			South Eastern (SD)			Murray (SD)	Balance	New South Wales		
	Real estate agents	Other letting entities	Total	Real estate agents	Other letting entities	Total	Total	Total	Real estate agents	Other letting entities	Total
LETTING ENTITIES, CAPACITY AND EMPLOYMENT											
<i>March quarter 1994—</i>											
Letting entities	26	64	90	23	97	120	18	9	124	280	404
Flats, units and houses											
Single bedroom	86	263	349	82	242	324	105	67	367	1,564	1,931
Multiple bedroom	1,081	404	1,485	1,399	797	2,196	83	22	6,397	2,061	8,458
<i>Total flats, units and houses</i>	<i>1,167</i>	<i>667</i>	<i>1,834</i>	<i>1,481</i>	<i>1,039</i>	<i>2,520</i>	<i>188</i>	<i>89</i>	<i>6,764</i>	<i>3,625</i>	<i>10,389</i>
Bed spaces	5,055	2,741	7,796	7,839	4,599	12,438	760	321	33,972	14,629	48,601
Employment (persons) (a)	—	193	193	—	332	332	163	21	—	1,154	1,154
<i>March quarter 1995—</i>											
Letting entities	24	66	90	23	97	120	20	10	129	286	415
Flats, units and houses											
Single bedroom	91	258	349	84	240	324	106	80	388	1,669	2,057
Multiple bedroom	1,109	418	1,527	1,330	810	2,140	114	23	6,550	2,247	8,797
<i>Total flats, units and houses</i>	<i>1,200</i>	<i>676</i>	<i>1,876</i>	<i>1,414</i>	<i>1,050</i>	<i>2,464</i>	<i>220</i>	<i>103</i>	<i>6,938</i>	<i>3,916</i>	<i>10,854</i>
Bed spaces	5,299	2,844	8,143	7,535	4,655	12,190	943	391	34,877	15,969	50,846
Employment (persons) (a)	—	205	205	—	294	294	170	22	—	1,186	1,186
UNIT NIGHTS OCCUPIED ('000)											
<i>March quarter 1994</i>	<i>57.0</i>	<i>37.5</i>	<i>94.5</i>	<i>41.1</i>	<i>57.1</i>	<i>98.2</i>	<i>11.1</i>	<i>3.5</i>	<i>271.4</i>	<i>212.5</i>	<i>483.8</i>
<i>1995—</i>											
January	28.8	16.7	45.5	26.0	25.2	51.2	5.1	1.6	150.5	93.6	244.1
February	15.9	9.9	25.8	11.4	17.0	28.4	2.8	0.9	75.3	65.4	140.8
March	13.9	10.8	24.7	10.1	17.5	27.5	4.1	1.4	62.3	70.6	132.8
<i>March quarter 1995</i>	<i>58.6</i>	<i>37.4</i>	<i>96.0</i>	<i>47.5</i>	<i>59.6</i>	<i>107.1</i>	<i>12.1</i>	<i>3.9</i>	<i>288.1</i>	<i>229.6</i>	<i>517.7</i>
UNIT OCCUPANCY RATES (per cent)											
<i>March quarter 1994</i>	<i>54.3</i>	<i>62.4</i>	<i>57.2</i>	<i>30.8</i>	<i>61.5</i>	<i>43.4</i>	<i>65.8</i>	<i>44.2</i>	<i>44.6</i>	<i>65.2</i>	<i>51.8</i>
<i>1995—</i>											
January	77.5	79.6	78.3	59.3	77.4	67.0	75.3	51.0	70.0	77.1	72.5
February	47.4	52.3	49.2	28.8	58.0	41.2	46.0	30.1	38.9	59.8	46.4
March	37.3	52.5	42.7	23.0	53.6	36.1	60.2	44.2	29.1	58.3	39.7
<i>March quarter 1995</i>	<i>54.3</i>	<i>61.8</i>	<i>57.0</i>	<i>37.3</i>	<i>63.2</i>	<i>48.3</i>	<i>61.0</i>	<i>42.1</i>	<i>46.3</i>	<i>65.3</i>	<i>53.1</i>
UNIT LETTINGS ('000)											
<i>March quarter 1994</i>	<i>6.5</i>	<i>6.6</i>	<i>13.1</i>	<i>4.9</i>	<i>10.3</i>	<i>15.3</i>	<i>3.1</i>	<i>1.7</i>	<i>32.0</i>	<i>44.8</i>	<i>76.8</i>
<i>1995—</i>											
January	3.1	2.6	5.8	2.6	3.9	6.5	1.2	0.8	16.0	19.3	35.4
February	1.8	1.9	3.7	1.3	3.2	4.4	1.0	0.4	9.2	15.5	24.7
March	1.6	1.9	3.5	1.3	3.5	4.8	1.2	0.6	7.7	16.5	24.2
<i>March quarter 1995</i>	<i>6.5</i>	<i>6.5</i>	<i>13.0</i>	<i>5.2</i>	<i>10.6</i>	<i>15.8</i>	<i>3.3</i>	<i>1.9</i>	<i>32.9</i>	<i>51.3</i>	<i>84.2</i>
AVERAGE LENGTH OF STAY (days)											
<i>March quarter 1994</i>	<i>8.8</i>	<i>5.7</i>	<i>7.2</i>	<i>8.4</i>	<i>5.5</i>	<i>6.4</i>	<i>3.6</i>	<i>2.0</i>	<i>8.5</i>	<i>4.7</i>	<i>6.3</i>
<i>1995—</i>											
January	9.2	6.3	7.9	9.9	6.5	7.8	4.4	1.9	9.4	4.8	6.9
February	8.7	5.2	6.9	9.0	5.4	6.4	3.0	2.0	8.2	4.2	5.7
March	8.7	5.6	7.0	7.9	5.0	5.8	3.3	2.3	8.1	4.3	5.5
<i>March quarter 1995</i>	<i>9.0</i>	<i>5.8</i>	<i>7.4</i>	<i>9.2</i>	<i>5.6</i>	<i>6.8</i>	<i>3.6</i>	<i>2.1</i>	<i>8.7</i>	<i>4.5</i>	<i>6.1</i>
TAKINGS FROM ACCOMMODATION (\$'000)											
<i>March quarter 1994</i>	<i>2,830</i>	<i>2,297</i>	<i>5,127</i>	<i>2,025</i>	<i>3,525</i>	<i>5,550</i>	<i>588</i>	<i>152</i>	<i>14,670</i>	<i>15,792</i>	<i>30,463</i>
<i>1995—</i>											
January	1,768	1,281	3,049	1,556	2,105	3,661	287	73	10,693	8,243	18,936
February	678	524	1,202	453	869	1,322	157	37	3,356	4,878	8,234
March	625	532	1,157	396	888	1,284	223	59	2,718	5,129	7,847
<i>March quarter 1995</i>	<i>3,072</i>	<i>2,337</i>	<i>5,409</i>	<i>2,405</i>	<i>3,862</i>	<i>6,267</i>	<i>667</i>	<i>169</i>	<i>16,766</i>	<i>18,250</i>	<i>35,016</i>

(a) Employment numbers exclude real estate agents and their employees.

TABLE 10—HOLIDAY FLATS, UNITS AND HOUSES: SELECTED STATISTICAL DIVISIONS

Statistical Divisions and Selected Statistical Local Areas	Flats, units and houses				Bed spaces	Employ- ment (persons) (b)	Unit nights occupied			
	Letting entities	Single bedroom	Multiple bedroom	Total			Jan.	Feb.	Mar.	Mar. qtr
Blue Mountains (C)	8	21	172	193	1,133	30	3,272	1,273	1,449	5,994
Gosford (C)	9	14	531	545	3,017	3	9,650	3,627	1,888	15,165
Manly (A)	5	62	89	151	584	21	4,277	3,692	3,723	11,692
South Sydney (C)	9	246	99	345	909	81	8,355	7,465	8,399	24,219
Sydney (C)	7	181	30	211	675	32	4,699	4,099	4,470	13,268
Wyong (A)	11	60	283	343	1,723	23	8,164	3,918	3,538	15,620
Balance	12	264	179	443	1,649	64	10,825	9,470	10,623	30,918
<i>Sydney (SD)</i>	<i>61</i>	<i>848</i>	<i>1,383</i>	<i>2,231</i>	<i>9,690</i>	<i>254</i>	<i>49,242</i>	<i>33,544</i>	<i>34,090</i>	<i>116,876</i>
Great Lakes (A)	19	55	1,116	1,171	5,619	13	29,682	16,792	13,225	59,699
Port Stephens (A)	10	43	858	901	4,662	8	19,131	10,841	8,458	38,430
Balance	7	3	68	71	443	29	1,315	1,009	1,131	3,455
<i>Hunter (SD)</i>	<i>36</i>	<i>101</i>	<i>2,042</i>	<i>2,143</i>	<i>10,724</i>	<i>50</i>	<i>50,128</i>	<i>28,642</i>	<i>22,814</i>	<i>101,584</i>
<i>Illawarra (SD)</i>	<i>31</i>	<i>80</i>	<i>647</i>	<i>727</i>	<i>3,705</i>	<i>56</i>	<i>16,217</i>	<i>6,667</i>	<i>5,043</i>	<i>27,927</i>
Ballina (A) and Richmond River (A)	13	17	303	320	1,446	9	8,247	4,407	4,642	17,296
Byron (A)	19	120	384	504	2,442	96	11,649	7,529	5,873	25,051
Tweed (A) Parts A & B	15	32	234	266	1,172	30	5,116	2,147	2,624	9,887
<i>Richmond — Tweed (SD)</i>	<i>47</i>	<i>169</i>	<i>921</i>	<i>1,090</i>	<i>5,060</i>	<i>135</i>	<i>25,012</i>	<i>14,083</i>	<i>13,139</i>	<i>52,234</i>
Coffs Harbour (C)	28	75	323	398	1,691	81	10,549	5,788	6,050	22,387
Greater Taree (C)	4	30	1	31	117	6	435	175	135	745
Hastings (A)	26	60	580	640	2,776	51	15,484	8,487	8,213	32,184
Kempsey (A)	12	70	292	362	1,609	18	8,251	5,735	5,415	19,401
Maclean (A)	8	23	295	318	1,491	9	7,551	3,606	2,793	13,950
Nambucca (A)	3	11	16	27	94	6	641	348	417	1,406
Balance	9	80	20	100	365	34	2,611	1,665	1,682	5,958
<i>Mid-North Coast (SD)</i>	<i>90</i>	<i>349</i>	<i>1,527</i>	<i>1,876</i>	<i>8,143</i>	<i>205</i>	<i>45,522</i>	<i>25,804</i>	<i>24,705</i>	<i>96,031</i>
Bega Valley (A)	66	71	1,016	1,087	4,925	175	27,584	17,018	17,482	62,084
Eurobodalla (A)	35	112	767	879	4,384	56	19,829	9,786	7,950	37,565
Balance	19	141	357	498	2,881	63	3,783	1,548	2,107	7,438
<i>South Eastern (SD)</i>	<i>120</i>	<i>324</i>	<i>2,140</i>	<i>2,464</i>	<i>12,190</i>	<i>294</i>	<i>51,196</i>	<i>28,352</i>	<i>27,539</i>	<i>107,087</i>
Berrigan (A)	3	25	11	36	133	5	737	339	538	1,614
Corowa (A)	8	74	43	117	474	139	2,815	1,575	2,273	6,663
Murray (A), Wakool (A) and Wentworth (A)	9	7	60	67	336	26	1,582	921	1,294	3,797
<i>Murray (SD)</i>	<i>20</i>	<i>106</i>	<i>114</i>	<i>220</i>	<i>943</i>	<i>170</i>	<i>5,134</i>	<i>2,835</i>	<i>4,105</i>	<i>12,074</i>
Balance of State	10	80	23	103	391	22	1,628	867	1,410	3,905
NEW SOUTH WALES	415	2,057	8,797	10,854	50,846	1,186	244,079	140,794	132,845	517,718

(a) Statistical Local Areas are not shown separately in this table when data for them are confidential or nil. Data for these are aggregated and shown as the Balance of the particular Statistical Division. Likewise, data for Statistical Divisions not specifically identified are nil or included in Balance of State. (b) Employment numbers exclude real estate agents and their employees.

AND STATISTICAL LOCAL AREAS (a), NEW SOUTH WALES, MARCH QUARTER 1995

Unit occupancy rates (per cent)				Unit lettings				Average length of stay (days)	Takings from accommodation (\$'000)			
Jan.	Feb.	Mar.	Mar. qtr	Jan.	Feb.	Mar.	Mar. qtr	Mar. qtr	Jan.	Feb.	Mar.	Mar. qtr
54.7	23.6	24.2	34.5	617	340	427	1,384	4.3	163	88	103	354
57.1	23.8	11.2	30.9	1,202	493	345	2,040	7.4	1,135	209	120	1,464
91.4	87.3	79.5	86.0	930	710	619	2,259	5.2	576	426	395	1,397
78.1	77.3	78.5	78.0	1,870	1,798	1,836	5,504	4.4	800	781	787	2,368
71.8	69.4	68.3	69.9	1,947	1,508	1,547	5,002	2.7	449	396	436	1,282
76.8	40.8	33.3	50.6	1,260	983	766	3,009	5.2	663	213	181	1,057
78.8	76.3	77.4	77.5	2,378	2,017	2,329	6,724	4.6	1,276	1,042	1,174	3,492
71.2	53.7	49.3	58.2	10,204	7,849	7,869	25,922	4.5	5,062	3,155	3,197	11,414
81.8	51.2	36.4	56.7	3,254	1,878	1,579	6,711	8.9	1,714	620	489	2,823
68.5	43.0	30.3	47.4	2,073	1,694	1,136	4,903	7.8	1,493	521	404	2,418
59.7	50.8	51.4	54.1	410	349	411	1,170	3.0	161	111	129	401
75.5	47.7	34.3	52.7	5,737	3,921	3,126	12,784	7.9	3,368	1,251	1,023	5,642
72.0	33.5	23.9	43.9	2,073	1,374	1,026	4,473	6.2	1,456	399	267	2,122
83.1	49.2	46.8	60.1	849	481	557	1,887	9.2	509	195	174	878
74.6	53.4	37.6	55.2	1,668	1,207	1,043	3,918	6.4	1,165	440	359	1,965
62.0	28.8	31.8	41.3	536	287	393	1,216	8.1	305	75	102	483
74.0	46.1	38.9	53.2	3,053	1,975	1,993	7,021	7.4	1,980	710	636	3,326
85.5	52.2	50.3	63.2	1,674	1,036	1,079	3,789	5.9	845	278	278	1,402
45.3	20.2	14.0	26.7	63	38	41	142	5.2	21	8	5	35
78.0	47.4	41.4	55.9	1,964	1,208	1,204	4,376	7.4	887	420	436	1,743
73.5	56.6	48.3	59.5	959	781	661	2,401	8.1	573	218	176	967
76.6	40.5	28.3	48.7	682	361	300	1,343	10.4	486	133	107	726
76.6	46.0	49.8	57.9	75	66	52	193	7.3	34	13	15	62
84.2	59.5	54.3	66.2	344	232	212	788	7.6	203	133	140	476
78.3	49.2	42.7	57.0	5,761	3,722	3,549	13,032	7.4	3,049	1,202	1,157	5,409
81.9	55.9	51.9	63.5	3,026	2,317	2,562	7,905	7.9	2,115	809	814	3,738
72.8	39.8	29.2	47.5	2,481	1,677	1,625	5,783	6.5	1,230	401	314	1,946
24.5	11.2	13.6	16.7	1,020	447	601	2,068	3.6	316	111	156	583
67.0	41.2	36.1	48.3	6,527	4,441	4,788	15,756	6.8	3,661	1,322	1,284	6,267
66.0	33.6	48.2	49.8	161	110	165	436	3.7	35	18	28	81
77.6	48.1	62.7	63.3	651	518	673	1,842	3.6	147	83	121	351
76.2	49.1	62.3	63.0	357	323	392	1,072	3.5	104	56	74	235
75.3	46.0	60.2	61.0	1,169	951	1,230	3,350	3.6	287	157	223	667
51.0	30.1	44.2	42.1	835	440	602	1,877	2.1	73	37	59	169
72.5	46.4	39.7	53.1	35,359	24,673	24,183	84,215	6.1	18,936	8,234	7,847	35,016

TABLE 11 — CARAVAN PARKS: STATISTICAL DIVISIONS AND SELECTED

Statistical Divisions and Selected Statistical Local Areas	Capacity					Total	Sites occupied by long-term guests	Other sites perman- ently reserved	Employ- ment (persons)
	Establish- ments	On-site vans	Other powered sites	Unpow- ered sites	Cabins, flats etc.				
Baulkham Hills (A)	9	40	567	118	—	725	11	251	19
Camden (A)	3	40	408	10	—	458	272	—	10
Gosford (C)	12	51	1,555	215	49	1,870	556	648	54
Hawkesbury (C)	8	65	525	114	10	714	132	170	30
Sutherland Shire (A)	6	95	247	6	56	404	176	6	21
Wyong (A)	33	370	4,021	346	159	4,896	1,052	2,082	148
Balance	20	604	1,653	151	103	2,511	1,229	8	121
<i>Sydney (SD)</i>	<i>91</i>	<i>1,265</i>	<i>8,976</i>	<i>960</i>	<i>377</i>	<i>11,578</i>	<i>3,428</i>	<i>3,165</i>	<i>403</i>
Cessnock (C)	4	39	165	32	38	274	96	—	12
Great Lakes (A)	26	198	3,015	683	229	4,125	497	1,574	150
Lake Macquarie (C)	17	164	1,823	222	81	2,290	1,053	344	81
Muswellbrook (A)	4	75	163	28	12	278	86	—	10
Port Stephens (A)	19	177	2,620	263	104	3,164	543	1,374	106
Scone (A)	3	29	66	32	14	141	17	27	14
Balance	15	121	657	434	42	1,254	138	232	46
<i>Hunter (SD)</i>	<i>88</i>	<i>803</i>	<i>8,509</i>	<i>1,694</i>	<i>520</i>	<i>11,526</i>	<i>2,430</i>	<i>3,551</i>	<i>419</i>
Kiama (A)	7	102	1,476	329	16	1,923	33	1,110	37
Shellharbour (A)	3	50	544	240	12	846	151	208	13
Shoalhaven (C) & Wingecarribee (A)	76	476	7,681	2,028	360	10,545	710	5,617	276
Wollongong (C)	7	62	1,602	124	118	1,906	457	680	50
<i>Illawarra (SD)</i>	<i>93</i>	<i>690</i>	<i>11,303</i>	<i>2,721</i>	<i>506</i>	<i>15,220</i>	<i>1,351</i>	<i>7,615</i>	<i>376</i>
Ballina (A)	13	117	1,170	271	86	1,644	618	142	45
Byron (A)	12	86	799	785	115	1,785	290	57	33
Lismore (C)	5	96	243	40	67	446	230	2	27
Tweed (A) Pts A & B	29	196	3,122	322	171	3,811	1,497	643	134
Balance	9	50	664	280	25	1,019	139	114	22
<i>Richmond — Tweed (SD)</i>	<i>68</i>	<i>545</i>	<i>5,998</i>	<i>1,698</i>	<i>464</i>	<i>8,705</i>	<i>2,774</i>	<i>958</i>	<i>261</i>
Bellingen (A)	9	65	567	133	27	792	171	103	24
Coffs Harbour (C)	21	215	1,745	406	205	2,571	677	61	113
Hastings (A)	28	335	2,077	586	183	3,181	788	165	117
Kempsey (A)	13	171	958	410	26	1,565	146	176	38
Maclean (A)	17	90	1,129	399	137	1,755	325	62	70
Nambucca (A)	9	99	1,046	394	112	1,651	312	71	50
Taree, Greater (C)	16	209	1,547	289	88	2,133	352	473	55
Ullmarra (A)	7	37	461	391	41	930	260	141	26
Balance	6	45	348	73	33	499	105	43	17
<i>Mid-North Coast (SD)</i>	<i>126</i>	<i>1,266</i>	<i>9,878</i>	<i>3,081</i>	<i>852</i>	<i>15,077</i>	<i>3,136</i>	<i>1,295</i>	<i>510</i>
Glen Innes (A)	6	31	143	76	26	276	20	—	20
Inverell (A)									
Pts A & B	4	48	88	21	9	166	60	—	7
Moree Plains (A)	5	58	236	34	68	396	49	—	8
Narrabri (A)	8	36	182	39	47	304	50	4	21
Tarnworth (C)	4	63	273	476	32	844	100	—	14
Tenterfield (A)	4	31	74	20	13	138	5	1	7
Balance	25	184	870	740	97	1,891	198	132	61
<i>Northern (SD)</i>	<i>56</i>	<i>451</i>	<i>1,866</i>	<i>1,406</i>	<i>292</i>	<i>4,015</i>	<i>482</i>	<i>137</i>	<i>138</i>

For footnotes see end of table.

STATISTICAL LOCAL AREAS (a), NEW SOUTH WALES, MARCH QUARTER 1995

<i>Site nights occupied</i>				<i>Site occupancy rates (per cent)</i>				<i>Takings from accommodation (\$'000)</i>			
<i>Jan.</i>	<i>Feb.</i>	<i>Mar.</i>	<i>Mar. qtr</i>	<i>Jan.</i>	<i>Feb.</i>	<i>Mar.</i>	<i>Mar. qtr</i>	<i>Jan.</i>	<i>Feb.</i>	<i>Mar.</i>	<i>Mar. qtr</i>
10,290	8,084	8,631	27,005	45.8	39.8	39.5	41.8	64	42	44	150
9,304	8,907	9,407	27,618	65.5	69.5	66.3	67.0	89	83	106	278
45,125	37,018	40,039	122,182	77.8	70.7	69.1	72.6	429	338	374	1,140
9,932	9,008	9,844	28,784	44.9	45.1	44.5	44.8	60	51	55	166
8,453	8,055	9,209	25,717	67.5	71.2	73.5	70.7	144	131	144	420
122,214	97,748	105,447	325,409	80.5	71.3	69.5	73.8	1,294	721	744	2,759
62,621	49,436	52,769	164,826	80.4	70.3	67.8	72.9	1,092	783	846	2,721
267,939	218,256	235,346	721,541	74.7	67.3	65.7	69.3	3,172	2,148	2,312	7,633
3,977	3,638	3,809	11,424	46.8	47.4	44.8	46.3	47	47	52	146
97,354	73,493	75,352	246,199	76.1	63.6	58.9	66.3	1,328	580	587	2,495
55,595	46,508	49,710	151,813	78.3	72.5	70.0	73.7	644	482	470	1,596
4,440	3,954	4,415	12,809	51.5	50.8	51.2	51.2	47	45	46	139
80,515	66,179	69,115	215,809	82.1	74.7	70.5	75.8	1,040	661	562	2,263
2,496	1,865	2,158	6,519	57.1	47.2	49.4	51.4	23	18	20	61
15,025	12,325	14,151	41,501	38.7	35.1	36.4	36.8	152	104	120	377
259,402	207,962	218,710	686,074	72.6	64.4	61.2	66.1	3,281	1,937	1,858	7,076
47,595	35,580	38,549	121,724	79.8	66.1	64.7	70.3	571	276	250	1,098
13,579	11,495	11,632	36,706	51.8	48.5	44.4	48.2	134	102	100	336
246,739	196,109	214,416	657,264	75.5	66.4	65.6	69.3	2,509	1,398	1,490	5,396
47,979	38,216	40,794	126,989	81.2	71.6	69.0	74.0	667	490	356	1,513
355,892	281,400	305,391	942,683	75.4	66.0	64.7	68.8	3,880	2,267	2,196	8,343
38,605	25,370	27,767	91,742	75.7	55.1	54.5	62.0	481	235	262	978
34,272	22,114	24,195	80,581	61.9	44.2	43.7	50.2	537	266	271	1,074
9,750	9,391	10,191	29,332	70.5	75.2	73.7	73.1	90	85	90	265
94,572	72,786	78,717	246,075	80.1	68.2	66.6	71.7	1,052	719	777	2,549
15,106	9,447	10,123	34,676	47.8	33.1	32.0	37.8	189	64	68	322
192,305	139,108	150,993	482,406	71.3	57.1	56.0	61.6	2,350	1,370	1,468	5,188
15,011	10,424	10,764	36,199	61.1	47.0	43.8	50.8	151	67	66	284
56,088	33,917	34,076	124,081	70.4	47.5	44.4	54.5	795	352	358	1,506
61,849	38,469	39,549	139,867	62.7	43.2	40.1	48.9	1,019	493	485	1,997
35,303	18,261	15,584	69,148	72.8	41.7	32.1	49.1	366	161	148	675
33,604	18,966	18,566	71,136	61.8	38.6	34.1	45.0	539	211	210	961
28,610	15,721	16,744	61,075	55.9	34.0	32.7	41.1	443	153	174	770
41,058	28,064	28,873	97,995	62.1	47.0	43.7	51.0	386	170	168	724
20,915	12,953	14,192	48,060	72.5	49.7	49.2	57.4	288	111	118	517
5,773	4,911	5,290	15,974	37.3	35.1	34.2	35.6	68	51	48	167
298,211	181,686	183,638	663,535	63.8	43.1	39.5	49.0	4,055	1,770	1,775	7,600
1,679	1,236	1,653	4,568	19.6	16.0	19.3	18.4	24	14	23	61
2,224	2,047	2,376	6,647	43.2	44.0	46.2	44.5	25	17	23	65
2,666	2,394	2,826	7,886	21.7	21.6	23.0	22.1	40	34	45	119
3,169	2,701	2,981	8,851	33.6	31.7	31.6	32.4	51	36	41	128
9,930	4,081	4,793	18,804	38.0	17.3	18.3	24.8	173	59	66	298
866	561	593	2,020	20.2	14.5	13.9	16.3	14	9	10	32
14,845	11,986	13,141	39,972	25.3	22.6	22.4	23.5	137	100	111	349
35,379	25,006	28,363	88,748	28.4	22.2	22.8	24.6	464	269	320	1,053

TABLE 11 — CARAVAN PARKS: STATISTICAL DIVISIONS AND SELECTED

Statistical Divisions and Selected Statistical Local Areas	Capacity					Total	Sites occupied by long-term guests	Other sites perman- ently reserved	Employ- ment (persons)
	Establish- ments	On-site vans	Other powered sites	Unpow- ered sites	Cabins, flats etc.				
Bourke (A)	3	26	76	66	8	176	9	2	5
Dubbo (C)	5	128	228	144	38	538	79	—	26
Gilgandra (A)	3	12	79	16	18	125	13	—	7
Mudgee (A)	6	60	345	423	81	909	125	312	20
Narromine (A)	5	32	164	48	11	255	28	—	9
Wellington (A)	4	37	135	291	31	494	7	73	19
Balance	16	85	544	1,363	39	2,031	122	1	43
<i>North Western (SD)</i>	<i>42</i>	<i>380</i>	<i>1,571</i>	<i>2,351</i>	<i>226</i>	<i>4,528</i>	<i>383</i>	<i>388</i>	<i>129</i>
Cowra (A)	4	29	281	590	42	942	19	101	23
Forbes (A)	4	17	117	67	39	240	52	—	17
Parkes (A)	6	53	123	23	31	230	58	1	13
Balance	20	105	751	783	77	1,716	206	29	58
<i>Central West (SD)</i>	<i>34</i>	<i>204</i>	<i>1,272</i>	<i>1,463</i>	<i>189</i>	<i>3,128</i>	<i>335</i>	<i>131</i>	<i>111</i>
Bega Valley (A)	24	245	2,721	1,265	244	4,475	182	615	134
Eurobodalla (A)	27	221	2,924	738	229	4,112	330	1,667	155
Goulburn (C)	3	41	130	16	18	205	27	—	10
Queanbeyan (C) & Yarrowlumla (A)	4	35	267	83	109	494	123	—	24
Snowy River (A)	13	99	863	449	128	1,539	7	576	63
Yass (A)	5	18	466	306	44	834	26	311	17
Balance	10	49	279	569	26	923	29	174	22
<i>South Eastern (SD)</i>	<i>86</i>	<i>708</i>	<i>7,650</i>	<i>3,426</i>	<i>798</i>	<i>12,582</i>	<i>724</i>	<i>3,343</i>	<i>425</i>
Griffith (C)	3	14	103	100	26	243	30	—	7
Murrumbidgee (A)	3	24	75	35	—	134	49	2	5
Tumut (A)	5	23	265	84	34	406	1	34	10
Wagga Wagga (C)	8	100	170	79	54	403	97	1	31
Balance	17	72	505	266	72	915	48	5	41
<i>Murrumbidgee (SD)</i>	<i>36</i>	<i>233</i>	<i>1,118</i>	<i>564</i>	<i>186</i>	<i>2,101</i>	<i>225</i>	<i>42</i>	<i>94</i>
Albury (C)	5	62	216	94	59	431	103	2	18
Berrigan (A)	8	14	525	40	36	615	45	253	29
Corowa (A)	10	17	1,195	170	107	1,489	62	832	41
Deniliquin (A)	6	35	446	171	28	680	36	240	15
Murray (A)	10	16	1,135	205	90	1,446	74	915	55
Wakool (A)	4	15	210	36	27	288	18	74	7
Wentworth (A)	6	59	239	48	44	390	70	1	17
Balance	13	47	528	302	156	1,033	48	98	94
<i>Murray (SD)</i>	<i>62</i>	<i>265</i>	<i>4,494</i>	<i>1,066</i>	<i>547</i>	<i>6,372</i>	<i>456</i>	<i>2,415</i>	<i>276</i>
<i>Far West (SD)</i>	<i>7</i>	<i>44</i>	<i>484</i>	<i>87</i>	<i>60</i>	<i>675</i>	<i>8</i>	<i>157</i>	<i>24</i>
<i>New South Wales</i>									
Short-term parks	478	3,341	43,043	15,722	3,055	65,161	3,680	22,175	2,015
Long-term parks	311	3,513	20,076	4,795	1,962	30,346	12,052	1,022	1,151
Total	789	6,854	63,119	20,517	5,017	95,507	15,732	23,197	3,166

(a) Statistical Local Areas are not shown separately in this table when data for them are confidential or nil. Data for these are aggregated and shown as the Balance of the particular Statistical Division.

STATISTICAL LOCAL AREAS (a), NEW SOUTH WALES, MARCH QUARTER 1995—continued

<i>Site nights occupied</i>				<i>Site occupancy rates (per cent)</i>				<i>Takings from accommodation (\$'000)</i>			
<i>Jan.</i>	<i>Feb.</i>	<i>Mar.</i>	<i>Mar. qtr</i>	<i>Jan.</i>	<i>Feb.</i>	<i>Mar.</i>	<i>Mar. qtr</i>	<i>Jan.</i>	<i>Feb.</i>	<i>Mar.</i>	<i>Mar. qtr</i>
547	417	412	1,376	10.0	8.5	7.6	8.7	6	4	4	15
6,224	4,859	5,955	17,038	37.3	32.3	35.7	35.2	134	90	118	342
706	515	669	1,890	18.2	14.7	17.3	16.8	9	6	8	23
14,066	12,682	14,334	41,082	49.9	49.8	50.9	50.2	54	45	60	158
1,321	1,047	1,058	3,426	16.7	14.7	13.4	14.9	11	8	9	28
3,790	2,739	3,052	9,581	24.7	19.8	19.9	21.5	27	13	17	56
7,951	6,362	7,582	21,895	12.6	11.2	12.0	12.0	81	64	85	230
34,605	28,621	33,062	96,288	24.7	22.6	23.6	23.6	322	230	300	852
6,711	3,840	4,261	14,812	23.0	14.6	14.6	17.5	58	34	37	129
2,309	2,008	2,243	6,560	31.0	29.9	30.1	30.4	27	21	25	72
2,737	2,222	2,750	7,709	38.4	34.5	38.6	37.2	37	29	37	103
12,575	10,604	13,480	36,659	23.6	22.1	25.3	23.7	140	126	152	418
24,332	18,674	22,734	65,740	25.1	21.3	23.4	23.4	261	210	250	721
85,304	41,862	41,856	169,022	61.5	33.4	30.2	42.0	1,610	519	503	2,632
99,369	70,237	76,357	245,963	78.0	61.0	59.9	66.5	1,373	625	606	2,604
2,165	1,562	1,705	5,432	34.1	27.2	26.8	29.4	35	26	29	90
6,616	5,109	6,203	17,928	43.2	36.9	40.5	40.3	158	101	124	383
27,929	18,953	20,620	67,502	58.5	44.0	43.2	48.7	407	147	172	726
14,769	10,576	11,537	36,882	57.1	45.3	44.6	49.1	87	55	48	190
5,580	9,215	11,282	26,077	19.5	35.7	39.4	31.4	55	31	36	122
241,732	157,514	169,560	568,806	62.0	44.7	43.5	50.2	3,725	1,504	1,517	6,746
3,363	2,810	3,415	9,588	44.6	41.3	45.3	43.8	46	45	44	136
1,815	1,613	1,755	5,183	43.7	43.0	42.2	43.0	13	13	13	39
4,335	2,844	3,375	10,554	34.4	25.0	26.8	28.9	73	36	48	157
4,882	4,673	5,330	14,885	39.1	41.4	42.7	41.0	77	67	76	220
7,504	4,808	6,299	18,611	26.5	18.8	22.2	22.6	129	73	98	299
21,899	16,748	20,174	58,821	33.6	28.5	31.0	31.1	337	234	280	851
5,718	4,172	4,442	14,332	42.8	34.6	33.2	36.9	107	64	77	248
13,207	10,585	12,234	36,026	69.3	61.5	64.2	65.1	89	31	55	175
37,976	27,777	31,045	96,798	82.3	66.6	67.3	72.2	258	126	199	584
10,819	8,490	9,063	28,372	51.3	44.6	43.0	46.4	41	25	70	136
34,871	31,288	33,104	99,263	77.8	77.3	73.8	76.3	228	169	176	573
3,748	3,045	3,669	10,462	42.0	37.8	41.1	40.4	31	18	27	77
4,075	4,029	5,408	13,512	33.7	36.9	44.7	38.5	41	39	47	128
12,432	5,988	6,790	25,210	38.8	20.7	21.2	27.1	189	73	93	354
122,846	95,374	105,755	323,975	62.2	53.5	53.5	56.5	984	545	745	2,275
6,322	5,713	7,112	19,147	30.2	30.2	34.0	31.5	31	20	73	125
1,321,813	942,908	1,005,741	3,270,462	65.4	51.7	49.9	55.8	15,815	7,659	7,862	31,335
539,051	433,154	475,097	1,447,302	57.3	51.0	50.5	53.0	7,048	4,845	5,233	17,126
1,860,864	1,376,062	1,480,838	4,717,764	62.9	51.5	50.1	54.9	22,863	12,504	13,094	48,461

TABLE 12 — CARAVAN PARKS (a) BY STATISTICAL DIVISION, NEW SOUTH WALES

Particulars	Sydney (SD)			Hunter (SD)			Illawarra (SD)			Richmond - Tweed (SD)		
	Short-term	Long-term	Total	Short-term	Long-term	Total	Short-term	Long-term	Total	Short-term	Long-term	Total
ESTABLISHMENTS, CAPACITY AND EMPLOYMENT												
<i>March quarter 1994—</i>												
Establishments	44	49	93	53	36	89	83	10	93	27	42	69
Capacity												
On-site vans	370	895	1,265	311	454	765	517	176	693	132	387	519
Other powered sites	5,366	3,893	9,259	5,729	2,785	8,514	9,845	1,295	11,140	2,543	3,481	6,024
Unpowered sites	979	210	1,189	1,421	361	1,782	2,440	347	2,787	1,210	537	1,747
Cabins, flats, etc.	254	199	453	290	185	475	444	51	495	128	289	417
<i>Total capacity</i>	<i>6,969</i>	<i>5,197</i>	<i>12,166</i>	<i>7,751</i>	<i>3,785</i>	<i>11,536</i>	<i>13,246</i>	<i>1,869</i>	<i>15,115</i>	<i>4,013</i>	<i>4,694</i>	<i>8,707</i>
Sites occupied by long-term guests	462	2,944	3,406	664	1,752	2,416	571	745	1,316	302	2,465	2,767
Other sites permanently reserved	2,985	171	3,156	3,308	218	3,526	7,675	152	7,827	793	229	1,022
Employment (persons)	207	211	418	254	147	401	315	45	360	85	160	245
<i>March quarter 1995—</i>												
Establishments	43	48	91	53	35	88	83	10	93	26	42	68
Capacity												
On-site vans	397	868	1,265	318	485	803	538	152	690	136	409	545
Other powered sites	5,085	3,891	8,976	5,819	2,690	8,509	9,983	1,320	11,303	2,489	3,509	5,998
Unpowered sites	713	247	960	1,390	304	1,694	2,387	334	2,721	1,094	604	1,698
Cabins, flats, etc.	134	243	377	314	206	520	454	52	506	131	333	464
<i>Total capacity</i>	<i>6,329</i>	<i>5,249</i>	<i>11,578</i>	<i>7,841</i>	<i>3,685</i>	<i>11,526</i>	<i>13,362</i>	<i>1,858</i>	<i>15,220</i>	<i>3,850</i>	<i>4,855</i>	<i>8,705</i>
Sites occupied by long-term guests	431	2,997	3,428	639	1,791	2,430	580	771	1,351	266	2,508	2,774
Other sites permanently reserved	3,055	110	3,165	3,327	224	3,551	7,533	82	7,615	726	232	958
Employment (persons)	202	201	403	266	153	419	331	45	376	91	170	261
SITE NIGHTS OCCUPIED ('000)												
<i>March quarter 1994</i>	<i>396.0</i>	<i>327.0</i>	<i>723.0</i>	<i>478.7</i>	<i>205.2</i>	<i>683.8</i>	<i>861.9</i>	<i>88.9</i>	<i>950.8</i>	<i>198.8</i>	<i>283.2</i>	<i>482.1</i>
<i>1995—</i>												
January	151.9	116.1	267.9	182.8	76.6	259.4	325.0	30.9	355.9	86.8	105.5	192.3
February	116.3	101.9	218.3	141.8	66.1	208.0	255.5	25.9	281.4	52.4	86.7	139.1
March	125.5	109.9	235.3	146.7	72.0	218.7	277.5	27.9	305.4	55.1	95.9	151.0
<i>March quarter 1995</i>	<i>393.7</i>	<i>327.9</i>	<i>721.5</i>	<i>471.3</i>	<i>214.8</i>	<i>686.1</i>	<i>858.0</i>	<i>84.7</i>	<i>942.7</i>	<i>194.3</i>	<i>288.1</i>	<i>482.4</i>
SITE OCCUPANCY RATES (per cent)												
<i>March quarter 1994</i>	<i>63.1</i>	<i>69.9</i>	<i>66.0</i>	<i>68.6</i>	<i>60.2</i>	<i>65.9</i>	<i>72.3</i>	<i>52.8</i>	<i>69.9</i>	<i>55.1</i>	<i>67.0</i>	<i>61.5</i>
<i>1995—</i>												
January	77.4	71.3	74.7	75.2	67.1	72.6	78.5	53.6	75.4	72.8	70.1	71.3
February	65.6	69.4	67.3	64.6	64.1	64.4	68.3	49.8	66.0	48.6	63.8	57.1
March	64.0	67.8	65.7	60.4	63.0	61.2	67.0	48.4	64.7	46.1	63.7	56.0
<i>March quarter 1995</i>	<i>69.1</i>	<i>69.5</i>	<i>69.3</i>	<i>66.8</i>	<i>64.8</i>	<i>66.1</i>	<i>71.3</i>	<i>50.6</i>	<i>68.8</i>	<i>56.1</i>	<i>65.9</i>	<i>61.6</i>
TAKINGS FROM ACCOMMODATION (\$'000)												
<i>March quarter 1994</i>	<i>4,002</i>	<i>3,942</i>	<i>7,943</i>	<i>4,265</i>	<i>2,382</i>	<i>6,647</i>	<i>6,957</i>	<i>925</i>	<i>7,883</i>	<i>2,216</i>	<i>2,738</i>	<i>4,954</i>
<i>1995—</i>												
January	1,663	1,510	3,172	2,230	1,051	3,281	3,533	347	3,880	1,175	1,175	2,350
February	911	1,237	2,148	1,177	760	1,937	1,976	291	2,267	487	883	1,370
March	960	1,352	2,312	1,085	773	1,858	1,905	291	2,196	491	978	1,468
<i>March quarter 1995</i>	<i>3,534</i>	<i>4,098</i>	<i>7,633</i>	<i>4,492</i>	<i>2,584</i>	<i>7,076</i>	<i>7,414</i>	<i>929</i>	<i>8,343</i>	<i>2,153</i>	<i>3,035</i>	<i>5,188</i>

For footnotes see end of table.

TABLE 12 — CARAVAN PARKS (a) BY STATISTICAL DIVISION, NEW SOUTH WALES—continued

Particulars	Mid - North Coast (SD)			Northern (SD)			North Western (SD)			Central West (SD)		
	Short-term	Long-term	Total	Short-term	Long-term	Total	Short-term	Long-term	Total	Short-term	Long-term	Total
ESTABLISHMENTS, CAPACITY AND EMPLOYMENT												
<i>March quarter 1994—</i>												
Establishments	53	75	128	25	31	56	23	22	45	12	20	32
Capacity												
On-site vans	517	788	1,305	140	307	447	180	226	406	47	161	208
Other powered sites	4,954	4,897	9,851	951	893	1,844	736	833	1,569	435	816	1,251
Unpowered sites	1,762	1,287	3,049	808	638	1,446	2,075	362	2,437	821	319	1,140
Cabins, flats, etc.	245	540	785	132	133	265	113	107	220	38	129	167
<i>Total capacity</i>	<i>7,478</i>	<i>7,512</i>	<i>14,990</i>	<i>2,031</i>	<i>1,971</i>	<i>4,002</i>	<i>3,104</i>	<i>1,528</i>	<i>4,632</i>	<i>1,341</i>	<i>1,425</i>	<i>2,766</i>
Sites occupied by long-term guests	674	2,524	3,198	87	412	499	59	322	381	19	359	378
Other sites permanently reserved	990	283	1,273	132	17	149	426	6	432	84	13	97
Employment (persons)	194	303	497	72	77	149	79	52	131	43	55	98
<i>March quarter 1995—</i>												
Establishments	55	71	126	24	32	56	24	18	42	16	18	34
Capacity												
On-site vans	524	742	1,266	139	312	451	214	166	380	66	138	204
Other powered sites	5,083	4,795	9,878	930	936	1,866	851	720	1,571	526	746	1,272
Unpowered sites	1,728	1,353	3,081	750	656	1,406	2,018	333	2,351	1,183	280	1,463
Cabins, flats, etc.	310	542	852	138	154	292	137	89	226	75	114	189
<i>Total capacity</i>	<i>7,645</i>	<i>7,432</i>	<i>15,077</i>	<i>1,957</i>	<i>2,058</i>	<i>4,015</i>	<i>3,220</i>	<i>1,308</i>	<i>4,528</i>	<i>1,850</i>	<i>1,278</i>	<i>3,128</i>
Sites occupied by long-term guests	716	2,420	3,136	94	388	482	117	266	383	28	307	335
Other sites permanently reserved	999	296	1,295	130	7	137	385	3	388	126	5	131
Employment (persons)	209	301	510	63	75	138	84	45	129	59	52	111
SITE NIGHTS OCCUPIED ('000)												
<i>March quarter 1994</i>	<i>322.1</i>	<i>337.2</i>	<i>659.3</i>	<i>43.6</i>	<i>51.8</i>	<i>95.4</i>	<i>63.5</i>	<i>38.8</i>	<i>102.3</i>	<i>17.0</i>	<i>46.0</i>	<i>63.0</i>
<i>1995—</i>												
January	163.3	134.9	298.2	15.6	19.7	35.4	24.6	10.0	34.6	9.9	14.5	24.3
February	88.8	92.9	181.7	11.4	13.6	25.0	19.7	8.9	28.6	6.3	12.4	18.7
March	82.5	101.1	183.6	12.9	15.5	28.4	23.0	10.0	33.1	7.0	15.7	22.7
<i>March quarter 1995</i>	<i>334.6</i>	<i>328.9</i>	<i>663.5</i>	<i>39.9</i>	<i>48.8</i>	<i>88.7</i>	<i>67.3</i>	<i>29.0</i>	<i>96.3</i>	<i>23.2</i>	<i>42.6</i>	<i>65.7</i>
SITE OCCUPANCY RATES (per cent)												
<i>March quarter 1994</i>	<i>47.9</i>	<i>49.9</i>	<i>48.9</i>	<i>23.9</i>	<i>29.2</i>	<i>26.5</i>	<i>22.7</i>	<i>28.2</i>	<i>24.5</i>	<i>14.1</i>	<i>35.9</i>	<i>25.3</i>
<i>1995—</i>												
January	68.9	58.5	63.8	25.8	30.9	28.4	24.7	24.6	24.7	17.2	36.5	25.1
February	41.6	44.6	43.1	20.8	23.6	22.2	21.8	24.4	22.6	12.1	34.6	21.3
March	35.2	43.9	39.5	21.2	24.3	22.8	23.1	24.8	23.6	12.2	39.7	23.4
<i>March quarter 1995</i>	<i>48.9</i>	<i>49.2</i>	<i>49.0</i>	<i>22.7</i>	<i>26.3</i>	<i>24.6</i>	<i>23.2</i>	<i>24.6</i>	<i>23.6</i>	<i>13.9</i>	<i>37.0</i>	<i>23.4</i>
TAKINGS FROM ACCOMMODATION (\$'000)												
<i>March quarter 1994</i>	<i>3,494</i>	<i>3,932</i>	<i>7,426</i>	<i>393</i>	<i>557</i>	<i>950</i>	<i>470</i>	<i>421</i>	<i>890</i>	<i>175</i>	<i>584</i>	<i>759</i>
<i>1995—</i>												
January	2,113	1,941	4,055	190	274	464	218	104	322	86	175	261
February	794	976	1,770	118	151	269	143	88	230	54	156	210
March	752	1,023	1,775	140	180	320	199	101	300	62	188	250
<i>March quarter 1995</i>	<i>3,660</i>	<i>3,940</i>	<i>7,600</i>	<i>448</i>	<i>606</i>	<i>1,053</i>	<i>559</i>	<i>293</i>	<i>852</i>	<i>202</i>	<i>519</i>	<i>721</i>

For footnotes see end of table.

TABLE 12 — CARAVAN PARKS (a) BY STATISTICAL DIVISION, NEW SOUTH WALES—continued

Particulars	South Eastern (SD)			Murrumbidgee and Far West (SDs)			Murray (SD)			New South Wales		
	Short-term	Long-term	Total	Short-term	Long-term	Total	Short-term	Long-term	Total	Short-term	Long-term	Total
ESTABLISHMENTS, CAPACITY AND EMPLOYMENT												
<i>March quarter 1994—</i>												
Establishments	68	19	87	33	11	44	50	11	61	471	326	797
Capacity												
On-site vans	681	109	790	196	82	278	183	80	263	3,274	3,665	6,939
Other powered sites	6,368	1,176	7,544	1,407	252	1,659	4,167	336	4,503	42,501	20,657	63,158
Unpowered sites	2,688	483	3,171	422	160	582	900	131	1,031	15,526	4,835	20,361
Cabins, flats, etc.	577	169	746	214	37	251	441	76	517	2,876	1,915	4,791
<i>Total capacity</i>	<i>10,314</i>	<i>1,937</i>	<i>12,251</i>	<i>2,239</i>	<i>531</i>	<i>2,770</i>	<i>5,691</i>	<i>623</i>	<i>6,314</i>	<i>64,177</i>	<i>31,072</i>	<i>95,249</i>
Sites occupied by long-term guests	357	378	735	68	157	225	281	177	458	3,544	12,235	15,779
Other sites permanently reserved	3,082	187	3,269	194	3	197	2,329	16	2,345	21,998	1,295	23,293
Employment (persons)	360	67	427	90	30	120	194	36	230	1,893	1,183	3,076
<i>March quarter 1995—</i>												
Establishments	70	16	86	31	12	43	53	9	62	478	311	789
Capacity												
On-site vans	616	92	708	192	85	277	201	64	265	3,341	3,513	6,854
Other powered sites	6,722	928	7,650	1,311	291	1,602	4,244	250	4,494	43,043	20,076	63,119
Unpowered sites	2,994	432	3,426	469	182	651	996	70	1,066	15,722	4,795	20,517
Cabins, flats, etc.	646	152	798	207	39	246	509	38	547	3,055	1,962	5,017
<i>Total capacity</i>	<i>10,978</i>	<i>1,604</i>	<i>12,582</i>	<i>2,179</i>	<i>597</i>	<i>2,776</i>	<i>5,950</i>	<i>422</i>	<i>6,372</i>	<i>63,161</i>	<i>30,346</i>	<i>93,507</i>
Sites occupied by long-term guests	417	307	724	67	166	233	325	131	456	3,680	12,052	15,732
Other sites permanently reserved	3,300	43	3,343	197	2	199	2,397	18	2,415	22,175	1,022	23,197
Employment (persons)	367	58	425	85	33	118	258	18	276	2,015	1,151	3,166
SITE NIGHTS OCCUPIED ('000)												
<i>March quarter 1994</i>	<i>495.5</i>	<i>67.2</i>	<i>562.8</i>	<i>59.5</i>	<i>21.2</i>	<i>80.7</i>	<i>287.9</i>	<i>23.4</i>	<i>311.3</i>	<i>3,224.5</i>	<i>1,490.0</i>	<i>4,714.4</i>
<i>1995—</i>												
January	223.9	17.9	241.7	21.2	7.0	28.2	116.8	6.1	122.8	1,321.8	539.1	1,860.9
February	144.1	13.4	157.5	16.2	6.3	22.5	90.4	5.0	95.4	942.9	433.2	1,376.1
March	154.7	14.8	169.6	20.5	6.8	27.3	100.4	5.4	105.8	1,005.7	475.1	1,480.8
<i>March quarter 1995</i>	<i>522.7</i>	<i>46.1</i>	<i>568.8</i>	<i>57.9</i>	<i>20.1</i>	<i>78.0</i>	<i>307.5</i>	<i>16.4</i>	<i>324.0</i>	<i>3,270.5</i>	<i>1,447.3</i>	<i>4,717.8</i>
SITE OCCUPANCY RATES (per cent)												
<i>March quarter 1994</i>	<i>53.4</i>	<i>38.6</i>	<i>51.0</i>	<i>29.5</i>	<i>44.4</i>	<i>32.4</i>	<i>56.2</i>	<i>41.8</i>	<i>54.8</i>	<i>55.8</i>	<i>53.3</i>	<i>55.0</i>
<i>1995—</i>												
January	65.8	36.0	62.0	31.4	38.0	32.8	63.3	46.3	62.2	65.4	57.3	62.9
February	46.9	29.8	44.7	26.5	37.5	28.9	54.3	42.2	53.5	51.7	51.0	51.5
March	45.5	29.8	43.5	30.3	36.7	31.7	54.4	41.2	53.5	49.9	50.5	50.1
<i>March quarter 1995</i>	<i>52.9</i>	<i>31.9</i>	<i>50.2</i>	<i>29.5</i>	<i>37.4</i>	<i>31.2</i>	<i>57.4</i>	<i>43.3</i>	<i>56.5</i>	<i>55.8</i>	<i>53.0</i>	<i>54.9</i>
TAKINGS FROM ACCOMMODATION (\$'000)												
<i>March quarter 1994</i>	<i>5,517</i>	<i>916</i>	<i>6,434</i>	<i>734</i>	<i>226</i>	<i>961</i>	<i>1,731</i>	<i>278</i>	<i>2,008</i>	<i>29,955</i>	<i>16,901</i>	<i>46,856</i>
<i>1995—</i>												
January	3,397	328	3,725	294	75	368	916	68	984	15,815	7,048	22,863
February	1,321	183	1,504	185	70	254	494	51	545	7,659	4,845	12,504
March	1,297	219	1,517	280	73	353	691	55	745	7,862	5,233	13,094
<i>March quarter 1995</i>	<i>6,015</i>	<i>731</i>	<i>6,746</i>	<i>759</i>	<i>217</i>	<i>976</i>	<i>2,101</i>	<i>174</i>	<i>2,275</i>	<i>31,335</i>	<i>17,126</i>	<i>48,461</i>

(a) A review of the occupancy of individual caravan parks resulted in reclassification of a net 13 caravan parks in September quarter 1994 from predominantly long-term to predominantly short-term.

TABLE 13 — VISITOR HOSTELS BY STATISTICAL DIVISION, NEW SOUTH WALES

Particulars	Sydney (SD)	Hunter (SD)	Illawarra (SD)	Richmond- Tweed (SD)	Mid - North Coast (SD)	South Eastern (SD) (a)	Balance of State	New South Wales (a)
ESTABLISHMENTS, CAPACITY AND EMPLOYMENT								
<i>March quarter 1994—</i>								
Establishments	38	7	4	10	7	5	8	79
Bed spaces	2,952	252	124	620	286	634	261	5,129
Employment (persons)	145	29	7	36	13	49	18	297
<i>March quarter 1995—</i>								
Establishments	40	8	5	12	8	5	8	86
Bed spaces	2,925	320	233	879	303	634	257	5,551
Employment (persons)	159	17	19	52	14	79	16	356
GUEST NIGHTS								
<i>March quarter 1994</i>	198,631	5,107	2,253	36,253	9,795	11,987	4,647	268,673
<i>1995—</i>								
January	76,152	3,199	2,199	19,462	5,081	4,073	1,480	111,646
February	68,588	1,748	2,533	16,328	3,844	3,301	1,054	97,396
March	74,230	1,997	2,730	15,408	3,541	3,696	1,442	103,044
<i>March quarter 1995</i>	218,970	6,944	7,462	51,198	12,466	11,070	3,976	312,086
BED OCCUPANCY RATES (per cent)								
<i>March quarter 1994</i>	74.8	22.5	20.2	65.0	38.1	21.0	19.8	58.2
<i>1995—</i>								
January	84.0	32.2	30.4	71.4	54.1	20.7	18.6	64.9
February	83.7	19.5	38.8	66.3	45.3	18.6	14.6	62.7
March	81.9	20.1	37.8	56.5	37.7	18.8	18.1	59.9
<i>March quarter 1995</i>	83.2	24.1	35.6	64.7	45.7	19.4	17.2	62.5
GUEST ARRIVALS								
<i>March quarter 1994</i>	49,924	2,420	1,285	11,455	5,982	6,303	2,035	79,404
<i>1995—</i>								
January	14,843	1,521	1,060	9,780	3,386	2,212	663	33,465
February	13,639	870	1,194	6,772	2,384	1,743	466	27,068
March	14,523	1,046	1,517	8,014	2,385	2,123	647	30,255
<i>March quarter 1995</i>	43,005	3,437	3,771	24,566	8,155	6,078	1,776	90,788
AVERAGE LENGTH OF STAY (days)								
<i>March quarter 1994</i>	4.0	2.1	1.8	3.2	1.6	1.9	2.3	3.4
<i>1995—</i>								
January	5.1	2.1	2.1	2.0	1.5	1.8	2.2	3.3
February	5.0	2.0	2.1	2.4	1.6	1.9	2.3	3.6
March	5.1	1.9	1.8	1.9	1.5	1.7	2.2	3.4
<i>March quarter 1995</i>	5.1	2.0	2.0	2.1	1.5	1.8	2.2	3.4
TAKINGS FROM ACCOMMODATION (\$'000)								
<i>March quarter 1994</i>	2,667	59	26	485	115	169	53	3,575
<i>1995—</i>								
January	1,107	38	32	268	68	54	18	1,584
February	996	21	38	210	52	39	12	1,368
March	1,074	27	41	193	45	50	19	1,448
<i>March quarter 1995</i>	3,176	85	110	671	165	144	49	4,400

(a) Includes Australian Capital Territory establishments.

EXPLANATORY NOTES

- *****
- INTRODUCTION** **1** This publication contains data for New South Wales from a quarterly survey of tourist accommodation establishments. The period covered by the latest survey is the 3 months ended 31 March 1995.
- SCOPE** **2** Tourist accommodation establishments currently included in the survey comprise two groups:
- Establishments which provide predominantly short-term accommodation (i.e. for periods of less than 2 months) to the general public. These include:
 - Hotels, motels and guest houses, with facilities* being hotels licensed to operate a public bar and motels, private hotels and guest houses all of which provide a bath (or shower) and toilet in most guest rooms and have breakfast available for guests.
 - NOTE: From December quarter 1993, hotel, motel and guest house establishments with fewer than five rooms have been formally excluded from the scope of this statistical collection. This change in scope resulted in the exclusion of 20 establishments which in the September quarter 1993 Survey aggregates for New South Wales represented 1.1 per cent of hotel, motel and guest house establishments but accounted for only 0.1 per cent of accommodation capacity, occupancy and takings.
 - Holiday flats, units and houses* (excluding establishments predominantly operated on a time share basis) which are operated by owners or managers who have sole letting rights to at least five flats, units or houses or by real estate agents for short-term letting. They are mainly self-contained in terms of cooking, bath (or shower) and toilet facilities and do not have breakfast available for guests. Data for holiday flats, units and houses include short-term owner occupation as well as paying guest occupation.
 - Visitor hostels* which provide accommodation to visitors on a bed basis (rather than by the room). This category does not include establishments providing charity type accommodation (e.g. Salvation Army hostels) nor hotels, motels and guest houses without in-room facilities which provide accommodation on a per room basis.
 - *Caravan parks* which provide either predominantly short-term (i.e. for periods of less than 2 months) or predominantly long-term (i.e. for periods of 2 months or more) accommodation to the general public and which provide powered sites for caravans and toilet, shower and laundry facilities for guests.
- 3** Data collected and published for each type of establishment (other than holiday flats, units and houses) include both long-term and short-term guests at these establishments.
- 4** Establishments which provide more than one type of accommodation (e.g. a motel with attached caravan park) are treated as two or more separate establishments. However, self-contained units, flats, cabins, etc. attached to hotels, motels or to caravan parks are included in the capacity for those establishments and not treated as separate holiday flat, unit or house establishments.
- DEFINITIONS**
- 5** *Number of establishments.* For hotels, motels and guest houses, caravan parks and visitor hostels, the number of establishments within the scope of the survey which operated for any part of the survey period, or which closed temporarily for the quarter for seasonal reasons.
- 6** *Number of letting entities.* For holiday flats, units and houses, the number of owners, managers or real estate agents within the scope of the survey who operated for any part of the survey period.
- 7** Capacity in terms of *Guest rooms, Bed spaces, Holiday units or Caravan park sites, etc.* is the maximum number available to accommodate paying guests during the survey period. Capacity closed temporarily for seasonal reasons is included.
- 8** *Bed spaces.* Three-quarter beds are counted as one bed space; double beds as two bed spaces. Cots are excluded.
- 9** *Total caravan park capacity* comprises *On-site vans, Other powered sites, Unpowered sites and Cabins, etc.*

EXPLANATORY NOTES—continued

DEFINITIONS—continued

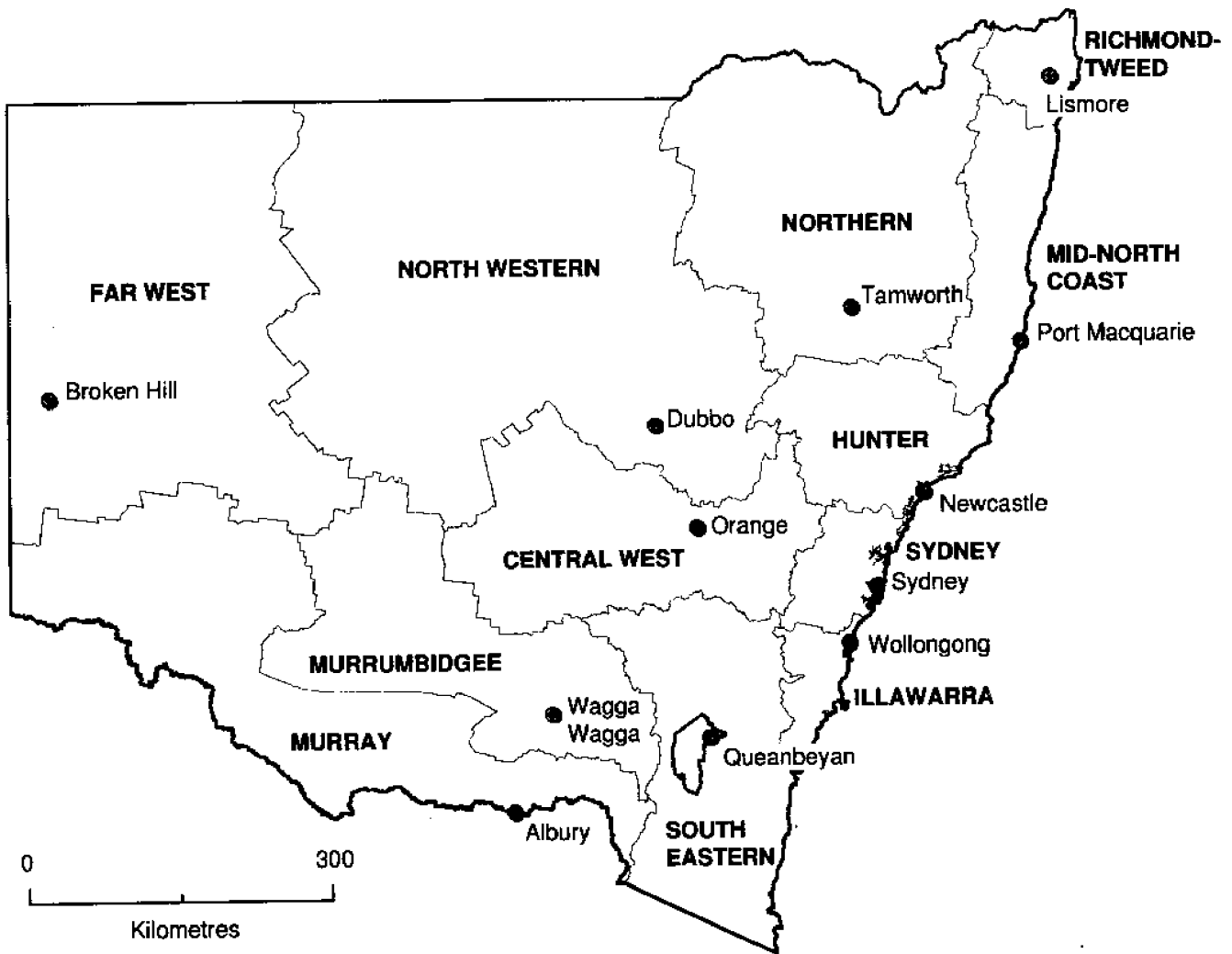
- 10** *Room nights available.* The number of guest rooms available multiplied by the number of days for which they were available during the survey period. Includes operating periods only for establishments closing (other than for seasonal reasons) or opening during the survey period.
- 11** Occupancy in terms of *Room nights, Unit nights or Site nights occupied* refers to the total number of nights each guest room, holiday unit or caravan park site, etc. was occupied during the survey period.
- NOTE: From September quarter 1992, caravan park sites, etc. permanently reserved for 2 months or more at the end of the survey period but only casually occupied by their tenants have been recorded continuously as *Site nights occupied* irrespective of whether the tenants of individual sites were in residence on any particular night. (See also paragraph 14 below). Previously, usage of these sites was recorded as *Site nights occupied* only when their tenants were in the park. Total site occupancy rates from September quarter 1992 are therefore not comparable with those from previous quarters.
- 12** Occupancy in terms of *Guest nights* refers to the total number of nights each paying guest stayed during the survey period.
- 13** *Sites occupied by long-term guests.* The total number of sites, etc. occupied at the end of the survey period by guests who have stayed continuously for 2 months or more.
- 14** *Other sites permanently reserved.* The total number of powered and unpowered sites, on-site vans and cabins, etc. continuously let for 2 months or more by the end of the survey period to tenants who occupy the sites only on a casual or sporadic basis. Separate data for this item are available only from September quarter 1992.
- 15** *Occupancy rates* represent occupancy expressed as a percentage of total capacity available during the survey period – e.g.
- $$\text{Room occupancy rate (\%)} \text{ for the period} = \frac{\text{Room nights occupied}}{(\text{Guest rooms}) \times (\text{No. of days in the period})} \times 100$$
- providing that, for establishments closing (other than for seasonal reasons) or opening during the period, the denominator of the above expression includes only operating periods.
- 16** *Guest arrivals.* The total number of paying guests counted only on the first night they stayed at the accommodation establishment.
- 17** *Unit lettings.* The total number of times a holiday flat, unit or house was occupied by a new tenant, counted only on the first night it was occupied by the new tenant.
- 18** *Average length of stay* is expressed in number of days and is calculated:
- for hotels, motels and guest houses and for visitor hostels, by dividing *Guest nights* by *Guest arrivals* and
 - for holiday flats, units and houses, by dividing *Unit nights occupied* by *Unit lettings*.
- 19** *Takings from accommodation.* Revenue received from the provision of accommodation. Takings from meals are excluded. Takings from accommodation for each month generally represent the takings received during that month. Where payments are received in advance of, or after, the provision of accommodation to guests, the monthly figure for takings from accommodation may not necessarily bear a direct relationship to the number of guests accommodated during the month. Rental and storage fees paid to caravan parks for the keeping of private vans in parks are included in the takings of the month they are received.
- 20** *Star grading.* The grading of hotels and motels with facilities based on the classification system used by members of the Australian Automobile Association (AAA). The gradings are allocated according to a points system based on the amenities and facilities available to guests. Details of the grading scheme are contained in the RACV-RAASA members' publication *Accommodation Australia*, or the individual tour guides produced by members of the AAA. For the purpose of classifying establishments to a star

EXPLANATORY NOTES—continued

DEFINITIONS —continued	<p>grading in this publication, 'half' star gradings are ignored (e.g. a two and a half star grading has been shown as two star).</p> <p>21 <i>Employment.</i> The number of persons working at accommodation establishments at the end of the survey period (including working proprietors and those working on other than accommodation activities).</p>
AUSTRALIAN STANDARD GEOGRAPHICAL CLASSIFICATION	<p>22 Statistics presented in this publication have been classified according to the Australian Standard Geographical Classification (ASGC), Edition 2.4. This classification incorporates a number of hierarchic structures of geographic areas. The appropriate spatial units of the main structure of the ASGC used in this publication are defined as follows.</p> <p><i>Statistical Local Areas (SLAs)</i> are in most cases either identical with, or have been aggregated to, the previously published whole or part legal Local Government Areas (LGAs) as defined under the (State) <i>Local Government Act 1919</i> and comprising cities (C) and, from 1 July 1994, areas (A) to replace previous municipalities (M) and shires (S). In other cases, they are identical to each previously published unincorporated area. In aggregate, SLAs cover the whole of the State without gaps or overlaps. In some cases, legal LGAs overlap Statistical Subdivision boundaries and therefore comprise two SLAs (Part A and Part B) or three SLAs in the case of Cabonne (A) (Part A, Part B and Part C).</p> <p><i>Statistical Subdivisions (SSDs).</i> These consist of one or more SLAs and form the intermediate size spatial unit for the presentation of regional data.</p> <p><i>Statistical Divisions (SDs).</i> These consist of one or more SSDs. The divisions are designed to be relatively homogeneous regions characterised by identifiable social and economic units within the region, under the unifying influence of one or more major towns or cities. For more detailed information, refer to the ASGC (1216.0).</p>
UNPUBLISHED STATISTICS	<p>23 The ABS may make available on request certain unpublished tourist accommodation statistics. In particular, small geographic area and other tabulations are available for various accommodation types in a time series format. A charge may be made for this information.</p>
RELATED PUBLICATIONS	<p>24 Publications for Australia, and each State and Territory, are released by the respective offices of the ABS. Tourist accommodation statistics for past quarters are available on request. Other ABS publications which may be of interest include:</p> <p style="padding-left: 40px;"><i>Directory of Tourism Statistics</i> (1130.0) (irregular, first and latest issue: 1991)</p> <p style="padding-left: 40px;"><i>Overseas Arrivals and Departures, Australia</i> (3401.0) (monthly)</p> <p style="padding-left: 40px;"><i>Tourism Indicators Australia</i> (8634.0) (quarterly)</p> <p style="padding-left: 40px;"><i>Tourist Accommodation, Australia</i> (8635.0) (quarterly)</p> <p>25 Current publications produced by the ABS are listed in the <i>Catalogue of Publications and Products</i> (1101.0). The ABS also issues the <i>Publications Advice</i> (1105.0) on Tuesdays and Fridays which lists publications to be released in the next few days. Both the <i>Catalogue</i> and <i>Publications Advice</i> are available from any ABS office.</p>
SYMBOLS AND OTHER USAGES	<p>n.a. not available</p> <p>n.p. not available for publication but included in totals where applicable</p> <p>r figure or series revised since previous issue</p> <p>.. not applicable</p> <p>— nil or rounded to zero</p> <p>A Area (as from 1 July 1994). Previously Municipality (M) and Shire (S).</p> <p>C City</p> <p>SD Statistical Division</p> <p>26 Where figures have been rounded, discrepancies may occur between totals and the sums of the component items.</p>

GREG BRAY
Deputy Commonwealth Statistician

**REFERENCE MAP
STATISTICAL DIVISIONS, NEW SOUTH WALES**



STATISTICAL DIVISION

● Major urban centre



For more information ...

The ABS publishes a wide range of statistics and other information on Australia's economic and social conditions. Details of what is available in various publications and other products can be found in the *ABS Catalogue of Publications and Products* available at all ABS Offices (see below for contact details).

Information Consultancy Service

Information tailored to special needs of clients can be obtained from the Information Consultancy Service available at ABS Offices (see Information Inquiries below for contact details).

National Dial-a-Statistic Line

0055 86 400

(Steadycorn P/L: premium rate 25c/21.4 secs.)

This number gives you 24 hour access, 365 days a year for a range of statistics.

Electronic Data Services

A large range of data is available via on-line services, diskette, magnetic tape, tape cartridge and CD ROM. For more details about these electronic data services, contact any ABS Office (see below).

Bookshops and Subscriptions

There is a large number of ABS publications available from ABS bookshops (see below Bookshop Sales for contact details). The ABS also provides a subscription service through which nominated publications are supplied by mail on a regular basis (telephone Subscription Service toll free on 008 02 0608 Australia wide).

Sales and Inquiries

Regional Offices	Information Inquiries	Bookshop Sales
SYDNEY (02)	268 4611	268 4620
MELBOURNE (03)	9615 7000	9615 7829
BRISBANE (07)	222 6351	222 6350
PERTH (09)	360 5140	360 5307
ADELAIDE (08)	237 7100	237 7582
HOBART (002)	205 800	205 800
CANBERRA (06)	207 0326	207 0326
DARWIN (089)	432 111	432 111
National Office		
ACT (06)	252 6007	008 020 608

ABS Email Addresses

Keylink	STAT.INFO/ABS
X.400	(C:AU,A:TELMEMO,O:ABS,SN:INFO,FN:STAT)
Internet	STAT.INFO@ABS.TELEMEMO.AU



Information Services, ABS, GPO Box 796, Sydney NSW 2001
or any ABS office

